

# ELECTRICAL & LIGHTING PRODUCTS

## MAINS ADAPTORS



## LIGHTING



## ELECTRICAL TIMERS



## INDUSTRIAL TYPE CONNECTORS



## DIMMER SWITCH



BACK BOXES	2132 - 2133
BENCH LAMPS	2140
BULB ADAPTORS	2135
CANDLE BULBS	2138
COMPUTER LIGHT BULBS	2138
DICHORIC LIGHTS	2139
DIMMER SWITCHES	2132
DIMMER SWITCH PLUG-IN TYPE	2136
EARTH BONDING STRAPES	2134
EURO PLUG CONVERTERS	2130
EXTENTION LEADS	2131
FLEX CONNECTORS	2131 - 2132
FLUORESCENT STARTERS	2137
FRIDGE LAMP	2138
INDUSTRIAL POWER CONNECTORS	2137
JUNCTION BOXES	2133
LED LIGHTS	2139
LIGHT FITTINGS	2134 - 3125
LIGHT SWITCHES PULL	2133
LIGHT SWITCHES WALL	2132
MAGNIFYING LAMP	2140
MULTIWAY ADAPTORS	2130 - 2131
NIGHT LIGHTS	2135
OPAL BULBS	2138
OVEN & mICROWAVE LAMPS	2138
PLUG SOCKETS	2132
PYGMY BULBS	3138
PROJECTION LAMPS	2139
PULL SWITCHES	2133
PUSH LIGHT	2140
QUICK TEST BLOCK	2137
REMOTE CONTROL SWITCHES	2136
RCD APAPTOR	2135
SAFETY PLUGS	2130
SPOTLIGHT BULBS	2138
SPURS	2133
SURGE PROTECTORS	2136
SEWING MACHINE BULBS	2137
TABLE MAGNIFYING LAMPS	2140
TIMERS	2136
TERMINAL BLOCKS	2134
TRAVEL ADAPTORS	2130
TUNGSTEN CAPSULE LAMPS	2139

CON  
Z  
E  
N  
S

# SQUIRES MODEL & CRAFT TOOLS

## MAINS ELECTRICAL ACCESSORIES

**SAFETY PLUG** tough nylon blanking plugs for inserting into sockets when not in use. Sold in a pack of 5.



CODE	TYPE	PRICE
560-640	Safety Plug White 5 Pack.....	£1.50

**TRAVEL ADAPTOR PLUG** simple adaptors allowing UK equipment to be used in continental Europe. A version for Australia and the USA is also available.



CODE	TYPE	PRICE
560-642	Travel Adaptor European.....	£1.85
07-0787	Travel Adaptor Australian/USA.....	£1.90

**MSA03BL TRAVEL ADAPTOR** a mains adaptor to allow devices fitted with UK mains plugs to be used in Australian or USA sockets. Note: this is purely a socket adaptor - you must ensure your device is suitable for the local voltage. Conforms to BS5733, current rating 10A max



CODE	TYPE	PRICE
07-0787	MSA03BL Travel Adaptor.....	£1.90

**VISITOR ADAPTOR** plug in adaptor that allows equipment fitted with European Schuko plug to be used in a UK mains outlet. Fused at 13A and conforming to BS1363/3.



CODE	TYPE	PRICE
561-829	Visitor Adaptor.....	£2.50

**VISITOR ADAPTOR** a plug in adaptor that allows equipment from various countries including France, Belgium and Italy to be used in a UK mains outlet. Note - Does not earth with side contact earthed plugs. Fused at 13A, conforms to BS5733/A, BS1363



CODE	TYPE	PRICE
07-0830	Visitor Adaptor European.....	£4.99

**TRAVEL ADAPTOR** travel adaptor, 2-pin European plug to USA socket. (Not for use in the UK).



CODE	TYPE	PRICE
560-947	Travel Adapt 2 Pin European Plug - USA Socket.	£1.25

**USA MAINS PLUG** a USA mains plug for 110/240Vac in tough plastic. (Not for use in the UK).



CODE	TYPE	PRICE
560-373	USA Mains Plug.....	£0.99

**SHAVER ADAPTOR** a simple adaptor with 13A plug to a 2 pin socket to match the 2 pin plug as fitted to shavers. Manufactured to BS5733.



CODE	TYPE	PRICE
560-644	Shaver Adaptor.....	£1.79

**WORLD TRAVEL ADAPTOR SET** this handy travel adaptor set can be used in over 150 countries on 6 continents. The unit consists of 5 interlocking parts and is ideal set for travelling. Note: This is purely a socket adaptor - you must ensure your device is suitable for the local voltage.

Voltage 90-250Vac  
Frequency 50-60Hz  
Current 10Amax.  
Load 2500W max.  
Dimensions  
55 x 53 x 107mm



CODE	TYPE	PRICE
563-726	World Travel adaptor Set.....	£8.99

**EURO PLUG TO BS PLUG CONVERTER** used for converting 2 pin moulded Euro plugs to BS 3 pin plug. The 2 pins of the Euro plug are simply located into the 2 spring clips and the top of the plug hinges down with a screw fixing.



CODE	TYPE	PRICE
ECP5A	Euro to BS Converter Plug.....	£2.99

**13A MAINS NYLON PLUG** a tough 13A plug manufactured to BS1363 suitable for use in harsh environments. Available fitted with 3A or 13A fuse.



CODE	TYPE	PRICE
560-605	13A Nylon Fused Plug White (3A Fuse).....	£1.35
560-408	13A Nylon Fused Plug White (5A Fuse).....	£1.35
560-610	13A Nylon Fused Plug White (13A Fuse).....	£1.35
560-615	13A Nylon Fused Plug Black (13A Fuse).....	£1.49

**MAINS ADAPTORS** 2 way and 3 way mains adaptor manufactured in white urea formaldehyde. All pins and apertures are fully shuttered for improved safety. The 2 way adaptor is unfused, the 3 way adaptor has a 13 amp fuse. Approved to BS5733. Dimensions 50 x 50 x 50mm.



CODE	TYPE	PRICE
560-630	Mains Adaptor 2 Way.....	£1.99
560-631	Mains Adaptor 3 Way (13A Fuse).....	£2.99

# SQUIRES MODEL & CRAFT TOOLS

**PLUG-IN 4 WAY MAINS ADAPTOR** a unique 4 way mains adaptor which simply plugs into an existing 13A mains socket. Ideal for adding extra sockets without having trailing leads. It features surge and spike protection and has separate colour coded On/Off switches and neon indicators. Conforms to BS1363/A and BS5733/A. 13 amp fuse.

**Specification:**  
Power max: 3000W  
Max. current: 13A  
Dimensions:  
218 x 33 x  
112mm



CODE	TYPE	PRICE
563-819	Plug-in 4 Way Mains Adaptor.....	£12.99

**SINGLE EXTENSION SOCKET** a 1-Way trailing socket. Rated at 13A and conforming to BS1363/A.



CODE	TYPE	PRICE
561-855	Single Extension Socket.....	£1.79

**4-WAY MAINS TRAILING SOCKET** a 4 way mains extension socket with power indicator. It is tamperproof and has fixing holes for wall mounting. It is available in 2 and 5m lengths and conforms to BS1363/A.

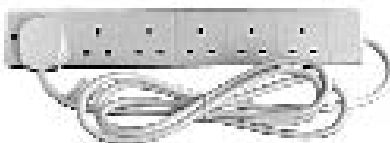
**Specification:**  
Voltage 250Vac  
Max. load 13A  
Cable 3 x 1.25mm  
Dimensions 251x59x26mm



CODE	TYPE	PRICE
563-839	4-Way Mains Trailing Socket 2m.....	£6.99
563-840	4-Way Mains Trailing Socket 5m.....	£9.99

**6-WAY MAINS TRAILING SOCKET** a 6 way mains extension socket with power indicator. It is tamperproof and has fixing holes for wall mounting. It is available in 2 and 5m lengths and conforms to BS1363/A.

**Specification:**  
Voltage 250Vac  
Max. load 13A  
Cable 3 x 1.25mm  
Dimensions 372x59x26mm



CODE	TYPE	PRICE
563-847	6-Way Mains Trailing Socket 2m.....	£8.99
563-846	6-Way Mains Trailing Socket 5m.....	£11.99

**10-WAY MAINS TRAILING SOCKET** a 10-way mains extension socket with power on indicator. It has fixing holes for wall mounting and the cable length is 2 metres and it conforms to BS1363/A.

**Specification:**  
Voltage 250Vac  
Max. load 13A  
Cable 3 x 1.25mm  
Dimensions 382x125x27mm



CODE	TYPE	PRICE
563-854	10-Way Mains Trailing Socket 2m.....	£16.99

**4-WAY SWITCHED MAINS TRAILING SOCKET** a 4-way mains extension lead with power indicator and individual on/off switches for each socket. It has fixing holes for wall mounting and is available in 2 and 5m lengths. Conforms to BS1363/A.



CODE	TYPE	PRICE
563-841	4-Way Mains Trailing Switched Socket 2m.....	£13.99
563-842	4-Way Mains Trailing Switched Socket 5m.....	£15.99

**4-WAY MAINS TRAILING SOCKETS WITH SURGE PROTECTION** a 4 way mains extension lead with surge protection and power indicator. It protects computers and sensitive electronic equipment from being damaged by electrical surges and spikes and has fixing holes for wall mounting. It is available in 2 and 5m lengths. Conforms to BS1363/A and BS5733 and tested to IEC61051, CECC 42200 and CECC 42201.

**Specification:**  
Voltage 250Vac  
Max. load 13A  
Cable 3 x 1.25mm



CODE	TYPE	PRICE
563-845	4-Way Mains Socket With Surge Protection 5m...	£11.99

**6-WAY MAINS TRAILING SOCKETS WITH SURGE PROTECTION** a 6 way mains extension lead with surge protection and power indicator. It protects computers and sensitive electronic equipment from being damaged by electrical surges and spikes and has fixing holes for wall mounting. It is available in 2 and 5m lengths. Conforms to BS1363/A and BS5733 and tested to IEC61051, CECC 42200 and CECC 42201.

**Specification:**  
Voltage 250Vac  
Max. load 13A  
Cable 3x1.25mm



CODE	TYPE	PRICE
563-850	6-Way Mains Socket With Surge Protection 5m...	£15.99

**FLEX THROUGH SWITCH 5 AMP** a through switch rated 5A.



CODE	TYPE	PRICE
563-082	Flex Through Switch 5A.....	£1.99

**PERMANENT FLEX CONNECTOR** in-line flex connectors designed for repairs and permanent joins in 2 or 3 core flex. Manufactured to BS5733, rated 5A.



CODE	TYPE	PRICE
560-649	Permanent Flex Connector 2 Pin.....	£1.25
560-652	Permanent Flex Connector 3 Pin.....	£1.75

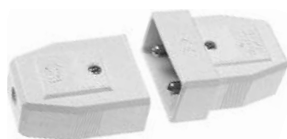
**FLEX CONNECTOR** in-line flex connectors manufactured to BS5733, rated 5A. Available with 2 or 3 pins.



CODE	TYPE	PRICE
560-645	Flex Connector 2 Pin.....	£1.99
560-647	Flex Connector 3 Pin.....	£2.49

# SQUIRES MODEL & CRAFT TOOLS

**NYLON FLEX CONNECTORS** a range of robust nylon in-line flex connectors with 2 or 3 pins. Available in white.



CODE	TYPE	PRICE
560-608	Nylon Flex Connector White 2 Pin 5A.....	£2.75
560-611	Nylon Flex Connector White 2 Pin 10A.....	£2.99
560-613	Nylon Flex Connector White 3 Pin 5A.....	£2.99

**UNSWITCHED SINGLE SOCKET** a shuttered 13amp single socket. Colour white, manufactured to BS1363.



CODE	TYPE	PRICE
560-669	13A Single Socket Unswitched.....	£1.85

**UNSWITCHED DOUBLE SOCKET** a shuttered 13amp double socket. Colour white, manufactured to BS1363.



CODE	TYPE	PRICE
560-667	13A Double Socket Unswitched.....	£3.29

**SWITCHED SINGLE SOCKET** a single shuttered 13amp socket which is switched. Colour white, manufactured to BS1363.



CODE	TYPE	PRICE
560-655	13A Single Socket Switched.....	£1.99

**SWITCHED DOUBLE SOCKET** a double shuttered 13amp double socket, each socket is switched. Colour white, manufactured to BS1363.



CODE	TYPE	PRICE
560-654	13A Double Socket Switched.....	£3.99

**LIGHT SWITCH SINGLE GANG** single light switches, 1 way for normal switching, 2 way for use where 2 switches are used to operate the same lights - stairs, hall etc. Rated 5A. Colour white, manufactured to BS3676.



CODE	TYPE	PRICE
560-657	Single Gang Light Switch 1 Way.....	£1.45
560-659	Single Gang Light Switch 2 Way.....	£1.75

**LIGHT SWITCH 2 GANG 2 WAY** 2 separate 2 way light switches, for use where 2 switches are used to operate the same lights - stairs, hall etc. Rated 5A. Colour white, manufactured to BS3676.



CODE	TYPE	PRICE
560-670	Double Light Switch 2 Way.....	£2.75

**LIGHT SWITCH THREE GANG** 3 separate 2 way light switches, for use where 2 switches are used to operate the same lights - stairs, hall and landing etc. Rated 5A. Colour white, manufactured to BS3676.



CODE	TYPE	PRICE
560-660	Three Gang Light Switch 2 Way.....	£3.50

**DIMMER SWITCH** a rotary one way dimmer switch, rated 400 watts.



CODE	TYPE	PRICE
560-616	Dimmer Switch 1 Way 400W.....	£9.99

**DOUBLE DIMMER SWITCH** a rotary one way double dimmer switch, rated 2 x 250 watts.



CODE	TYPE	PRICE
560-618	Double Dimmer Switch 1 Way 2 x 250W.....	£18.99

**DRY LINING BOXES** single and double gang clip-in dry lining socket box manufactured to BS5733 for use in partition walls. Depth 30mm. Colour white.



CODE	TYPE	PRICE
560-675	Dry Lining Box Single Gang.....	£1.49
560-662	Dry Lining Box Double Gang.....	£1.99

**SINGLE GANG SWITCH BOX** a single surface mount switch box with 19mm depth. Manufactured to BS567. Colour white.



CODE	TYPE	PRICE
560-677	Single Gang Surface Mount Switch Box 19mm....	£0.99

# SQUIRES MODEL & CRAFT TOOLS

**SINGLE GANG SURFACE MOUNT BOX** a single surface mount socket box with 30mm or 47mm depth. Manufactured to BS5733. Colour white.



CODE	TYPE	PRICE
560-664	Single Gang Surface Mount Box 30mm.....	£0.99
560-666	Single Gang Surface Mount Box 47mm.....	£1.49

**SINGLE SURFACE BACK BOXES** 1-gang white surface mount back boxes for a variety of electrical face plates. Available 16mm, 25mm and 47mm depth sizes with moulded knockouts for cable entry and fixing. Conforms to BS5733



CODE	TYPE	PRICE
560-921	Single Surface Back Box 16mm Deep.....	£1.09
560-923	Single Surface Back Box 25mm Deep.....	£1.25
560-666	Single Surface Back Box 47mm Deep.....	£1.45

**DOUBLE GANG SURFACE MOUNT BOX** a double surface mount socket box with 30mm depth. Manufactured to BS5733. Colour white.



CODE	TYPE	PRICE
560-672	Double Gang Surface Mount Box 30mm.....	£1.50

**DOUBLE SURFACE BACK BOXES** 2-gang white surface mount back boxes for a variety of electrical face plates. Available in 25mm and 47mm depth sizes with moulded knockouts for cable entry and fixing. Conforms to BS5733



CODE	TYPE	PRICE
561-924	Double Surface Back Box 25mm Deep.....	£1.79
560-674	Double Surface Back Box 47mm Deep.....	£2.09

**BLANKING PLATES** single and double blanking plates. Colour white.



CODE	TYPE	PRICE
560-665	Blanking Plate Single.....	£0.65
560-679	Blanking Plate Double.....	£0.90

**SOCKET BOX CUTTING TEMPLATE** ideal for fast, accurate and consistent positioning of single and double power sockets on plasterboard walls. It has a spirit vial for horizontal positioning and an adjustable height gauge allows level positioning.



CODE	TYPE	PRICE
63955	Socket Box Template.....	£11.99

**13A FUSED SPURS** a range of fused spurs for the permanent connection of equipment. Fitted with 13A fuse. Colour white, manufactured to BS5733.



CODE	TYPE	PRICE
560-680	13A Fused Spur Unswitched.....	£3.75
560-685	13A Fused Spur Switched.....	£5.39

**13A FUSED SPUR SWITCHED** a switched spur with red neon indicator for the permanent connection of equipment. Fitted with 13A fuse. Colour white, manufactured to BS3676.



CODE	TYPE	PRICE
560-682	13A Fused Spur Switched + Neon.....	£4.99

**CONNECTOR WITH CORD OUTLET** a cord connector for hard-wiring an appliance. Rated 20A.



CODE	TYPE	PRICE
560-601	Connector with Cord Outlet 20A.....	£3.99

**JUNCTION BOXES** a range of circuit interconnection junction boxes. The 5A and 15A models have 4 terminals, the 30A model has 3 terminals. Colour white, manufactured to BS6220.



CODE	TYPE	PRICE
560-684	Junction Box 4 Terminal 5A.....	£1.19
560-686	Junction Box 4 Terminal 15A.....	£1.99
560-688	Junction Box 3 Terminal 30A.....	£1.99

**CEILING PULL SWITCH** a ceiling mounted cord pull switch for use in bathrooms etc. One way switch rated 5A. Colour white. Manufactured to BS3676. A two way ceiling switch is also available. Rated 6A.



CODE	TYPE	PRICE
560-690	Ceiling Switch 5A.....	£2.50
560-697	Ceiling Pull Switch 2 Way 6A.....	£2.99

**CEILING PULL SWITCH** a white ceiling pull switch with neon and indicator. Rated 45A.



CODE	TYPE	PRICE
560-691	Ceiling Pull Switch with Neon & Indicator 45A.....	£8.99

# SQUIRES MODEL & CRAFT TOOLS

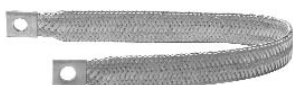
## EARTH STRAP

**EARTH STRAP** an earth clamp to BS957 for use in domestic and industrial properties to make a true earth connection. The clamp is used on copper water pipe and a earth cable is secured to the strap by a nut and washer.



CODE	TYPE	PRICE
520-960	Earth Strap.....	£1.75

**EARTH BONDING STRAP** a tinned copper braid lead fitted with integral lug terminations, suitable for a range of earthing applications for equipment housing and enclosures etc. The lugs have a M10 hole for fixing. Length 150mm.



CODE	TYPE	PRICE
520-523	Earth Bonding Strap Length 150mm 85A.....	£4.35

## TERMINAL BLOCKS

**TERMINAL BLOCKS** 12 way flexible terminal block strips that are easily cut into shorter lengths. 3, 5, 10, 15 and 30A.



CODE	TYPE	PRICE
TB0010	Terminal Block 3A.....	£0.50
560-111	Terminal Block 3A Pack of 10.....	£4.50
TB0020	Terminal Block 5A.....	£0.69
560-112	Terminal Block 5A Pack of 10.....	£5.99
560-890	Terminal Block 10A.....	£1.20
TB0030	Terminal Block 15A.....	£1.49
560-892	Terminal Block 30A.....	£1.99
560-893	Terminal Block 45A.....	£2.79
560-895	Terminal Block 60A.....	£3.99

## PLUG-IN TERMINAL BLOCKS

**PLUG-IN TERMINAL BLOCKS** a range of pluggable industrial quality terminal strips moulded in self extinguishing polypropylene. They are supplied as 12 way blocks which may be cut down to size. The wires are connected by a screw fixing. Supplied as a pair of male and female strips. The blocks are robust and ideal for joining wires that require to be moved frequently. Available with 3 connector pitches 8mm rated at 6A, 10mm and 12mm pitches are both rated at 10A.



CODE	TYPE	PRICE
560-843	Plug-in Terminal Block M/F - 6A/8mm Pitch.....	£3.99
TB0025	Plug-in Terminal Block M/F - 10A/10mm Pitch.....	£4.50
560-498	Plug-in Terminal Block M/F - 16A/12mm Pitch.....	£6.89

**FREE PARKING FOR 2 HOURS  
OUTSIDE OF OUR SHOP**

## LIGHT FITTINGS

**BOTTLE LAMP ADAPTOR** a lamp holder which fits into the neck of a bottle with an opening of 17 - 19mm diameter. Maximum bulb size 60 watt BC. Fitted with 1.8M approx of flex with BS plug.



CODE	TYPE	PRICE
560-051	Bottle Lamp Adaptor with Flex and Plug.....	£4.99

**CLIP-ON LAMP ADAPTOR** a lamp holder fitted with a strong clip suitable fitting the lamp to a shelf etc. Ideal for additional temporary lighting. Can be fitted with a shade. Maximum bulb size 100 watt BC. Fitted with 1.8M approx of flex with BS plug.



CODE	TYPE	PRICE
560-053	Clip-On Lamp Adaptor with Flex & Plug.....	£4.99

**CEILING ROSE PENDANT** a ceiling rose with pendant lamp holder, loop-in type fitted with 200mm of cable. Colour white. Manufactured to BS5042.



CODE	TYPE	PRICE
560-692	Ceiling Rose Pendant.....	£2.99

**BC LAMP HOLDERS** standard BC lamp holders available unswitched or with an On/Off switch. Colour white. Manufactured to BS5042.



CODE	TYPE	PRICE
560-694	BC Lamp Holder Unswitched.....	£0.85
560-696	BC Lamp Holder Switched.....	£1.35

**BC BATTEN LAMP HOLDER** a standard BC lamp holder, 3 terminal, HO shirt. Colour white. Manufactured to BS5042.



CODE	TYPE	PRICE
560-698	BC Batten Lamp Holder.....	£1.45

# SQUIRES MODEL & CRAFT TOOLS

**BATTEN LAMP HOLDER** a standard BC lamp holder, 3 terminal, Angled HO shirt type T1. Colour white. Manufactured to BS5042.



CODE	TYPE	PRICE
560-700	B C Batten Lamp Holder Angled.....	£1.50

**BC TO ES LAMP FITTING ADAPTOR** converts a BC light fitting to allow an ES fitting bulb to be used.



CODE	TYPE	PRICE
560-901	BC to ES Lamp Fitting Adaptor.....	£2.49

**ES TO BC LAMP FITTING ADAPTOR** converts an ES light fitting to allow a BC fitting bulb to be used.



CODE	TYPE	PRICE
560-903	ES to BC Lamp Fitting Adaptor.....	£4.75

## NIGHTLIGHT SWITCH

**PLUG-IN NIGHTLIGHT ADAPTOR** an automatic plug-in nightlight adaptor which switches off during the day and on at night. Ideal for communal stairways and lobbys .



CODE	TYPE	PRICE
560-404	Plug-in Nightlight Adaptor.....	£16.99

## NIGHT LIGHTS

**AUTOMATIC NIGHT LIGHT** a compact mains powered night light which switches on at dusk and goes off at dawn. It simply plugs into UK mains socket. Supplied with spare 7W lamp. Fuse rating 1A, conforms to BS4533.



CODE	TYPE	PRICE
110-948	Automatic Night Light.....	£7.99
110-946	Spare Bulbs for Automatic Night Light Pack of 2..	£2.39

**POST FREE DELIVERY ON ALL ORDERS  
WITHIN THE UNITED KINGDOM  
MINIMUM ORDER VALUE £15.00**

**You may mix your order from  
ANY of our catalogues**

**AUTOMATIC NIGHTLIGHT** a nightlight which plugs directly into a 13A 3 pin socket. Fitted with a light sensor that switches the light on at dusk and off at dawn. Ideal for hallways, children's bedrooms and stairways. Replacement bulbs are available.



CODE	TYPE	PRICE
110-605	Plug-in Automatic Nightlight 1605.....	£6.99
110-620	Spare Bulb for Automatic Nightlight E12 7Watt....	£1.29

**MOONLIGHT NIGHTLIGHT** an ultra low energy nightlight which plugs directly into a 13A 3 pin socket. Gives a soft blue/green light with slim design which does not use a bulb. Running cost are less than 16p per year if run continuously. Ideal for all around the home.



CODE	TYPE	PRICE
110-610	Moonlight Ultra Low Energy Nightlight 1610.....	£9.75

## NIGHTLIGHT BULBS

**E12 NIGHTLIGHT BULB** a low wattage E12 bulb for nightlights. Sold individually.



CODE	TYPE	PRICE
110-620	Spare Bulb for Nightlight E12.....	£1.29

**E14 NIGHTLIGHT BULB** a low wattage E14 bulb for nightlights. Sold individually.



CODE	TYPE	PRICE
110-615	Spare Bulb for Nightlight E14.....	£1.29

## RCD ADAPTOR

**RCD ADAPTOR** for use in domestic and some industrial premises where Residual Current protection is required. Designed to BS1363/7071.

Specification  
Rated voltage..220-240V ac  
Max load.....13 amps/3000W  
Sensitivity.....30mA  
Trip time.....40ms



CODE	TYPE	PRICE
110-130	RCD Circuit Breaker 13A.....	£9.99

# SQUIRES MODEL & CRAFT TOOLS

## TIMERS

**SEGMENTED TIMERS** plug-in segmented timers. The 24 hour timer has segments of 15 minutes which repeats continually every ay. The 7 Day timer has segments of 2 hours allowing the events to be varied up to 7 days. Both units have a manual override switch. For indoor use only, maximum load 3,000 watts.

**Subject to Design Change**



CODE	TYPE	PRICE
561-724	Segmented Plug-in Timer 24 Hour.....	£6.50
561-726	Segmented Plug-in Timer 7 Days.....	£6.99

**TIMER SWITCH WITH LED** a 24 hour timer switch that plugs directly into a standard wall socket.



CODE	TYPE	PRICE
561-103	Timer Switch With LED.....	£6.99

**7 DAY DIGITAL TIMER** a digital timer allowing various combination of days and random. Features LCD display, internal rechargeable battery for the display. Comforms to BS1363/3

**Specification**

Power supply 230Vac, 50Hz  
Power max. 3000W  
Max. current 13A  
Dimensions 130 x 70 x 70mm



CODE	TYPE	PRICE
07-0102	7 Day Digital Timer.....	£9.99

## REMOTE CONTROL SWITCH SET

**REMOTE CONTROL SWITCH SET** use to activate lights and devices in and around your house (wireless). The set contains 1 remote controller and 3 plug switches. Up to 30m range, remote control push buttons and sockets are numbered eg. Button 1 operates socket 1 only. Manual On/Off switch with LED indicator. Remote control battery is supplied. Mains power LED indicator.

**Specification**

Power max. 1000W  
Power supply 230Vac, 50Hz  
Transmission frequency 433.92MHz  
Remote: Battery 23A  
Dims 46 x 72 x 140mm



CODE	TYPE	PRICE
561-112	Remote Control Switch Set.....	£27.99

**REMOTE CONTROL MAINS SOCKET SET** a set of 5 plug-in 13A mains sockets which can be activated by remote control and are ideal for switching lights and other electrical equipment in the home or office. Features a single remote control operates 5 switches, button 1 operates socket 1 only etc. Each socket has POWER and ON indicators, the sockets can be operated manually. Operating range approx. 30m, Remote control battery supplied.

**Specification**

Power supply 230Vac, 50Hz  
Current/Max. Wattage 13A/2990W  
Frequency 433.92MHz  
Remote battery 12V, A23A  
Dimensions Socket 126 x 68 x 58mm  
Remote Control 145 x 51 x 18mm



CODE	TYPE	PRICE
07-0114	Remote Control Mains Socket Set.....	£40.99

## DIMMER SWITCH

**DIMMER SWITCH** a dimmer switch that plugs directly into a standard wall socket that allows light intensity =to be adjusted.

Dimensions 53 x 63 x 98mm.



CODE	TYPE	PRICE
561-109	Dimmer Switch.....	£6.99

## SURGE PROTECTION ADAPTOR

**SINGLE GANG ANTI-SURGE ADAPTOR** a mains plug adaptor designed to protect sensitive products against power surges. Protects up to 4.5kV surge, conforms to BS1363A and BS5733A. Response time 10 nano seconds, maximum load 13A. Power supply 230Vac, 50Hz  
Dimensions 33 x 52 x 80mm



CODE	TYPE	PRICE
07-0649	Single Gang Anti-Surge Adaptor 13A.....	£6.99

**POST FREE DELIVERY ON ALL ORDERS  
WITHIN THE UNITED KINGDOM  
MINIMUM ORDER VALUE £15.00**

**You may mix your order from  
ANY of our catalogues**



# SQUIRES MODEL & CRAFT TOOLS

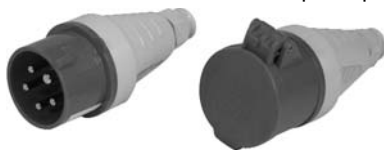
## INDUSTRIAL TYPE POWER CONNECTORS

**INDUSTRIAL TYPE 3 POLE POWER CONNECTORS** a range of industrial type 3 pole line connectors. The line socket has a spring loaded cover to protect the contacts when not in use. Slash proof to IP44. Rated 16A, 230V.



CODE	TYPE	PRICE
563-358	Industrial Type Line Socket 3 Pole 16A.....	£4.79
563-360	Industrial Type Line Plug 3 Pole 16A.....	£4.79

**INDUSTRIAL TYPE 5 POLE POWER CONNECTORS** a range of industrial type 5 pole line connectors. The line socket has a spring loaded cover to protect contacts when not in use. Splash proof to IP44. Rated 16A, 380V.



CODE	TYPE	PRICE
563-362	Industrial Type Line Socket 5 Pole 16A.....	£4.99
563-364	Industrial Type Line Plug 5 Pole 16A.....	£4.99

**SURFACE MOUNT SOCKET 16A 3 POLE** a wall/surface mount, waterproof socket with spring loaded cover to protect against water and dirt when not in use. Screw terminals for secure connection.



Voltage 250V  
Current rating 16A

CODE	TYPE	PRICE
563-361	Surface Mount Socket 16A 3Pole.....	£6.99

**SURFACE MOUNT SOCKET 16A 5 POLE** a wall/surface mount, waterproof socket with spring loaded cover to protect against water and dirt when not in use. Screw terminals for secure connection.



Voltage 380V  
Current rating 16A

CODE	TYPE	PRICE
563-365	Surface Mount Socket 16A 5 Pole.....	£4.99

**MOBILE MAINS SUPPLY UNIT** a Ceeform plug to 3 gang complete mains kit for use in tents and awnings. Complies to BS6500 & BS4343 Standard. Total protection with built-in RCD, distribution box with transparent window, 2 clips on rear to fasten to tent, trailer or pole. No assembly or wiring required. Storage bag included. Input voltage



220 - 240Vac, 50/60Hz  
Cable length 15.0m

CODE	TYPE	PRICE
07-4016	Mobile Mains Supply 3 Gang.....	£94.99

## QUICK TEST MAINS CONNECTOR

**QUICK TEST 13A MAINS CONNECTOR** a fused mains connector ideal for use in workshops, service and testing departments where temporary, quick and safe connection of mains equipment without the need to fit a 13A plug is required. The stripped plug less lead is inserted under the insulated colour coded clips which while the cover is open are also isolated from the mains supply. A fuse is also fitted and can be easily changed to suit the particular application being undertaken.



CODE	TYPE	PRICE
560-650	Quick Test Mains Adaptor .....	£39.99

## FLUORESCENT STARTER

**FLUORESCENT STARTER** universal starter for fluorescent tubes from 4 - 65W, 230Vac.



CODE	TYPE	PRICE
563-910	Fluorescent Starter 4 - 65W Single.....	£0.50
563-911	Fluorescent Starter 4 - 65W Box of 12.....	£5.00

## SEWING MACHINE BULBS

**HEMLINE SPARE BULBS** available as a screw or bayonet fitting. in three sizes.

**130-101**:- 20mm x 48mm (3/4" x 1<sup>7/8</sup>" ) small for push-in 15w 240v. Suits:- Janome/New Home and other machines using short plug in bulbs.

**130-102**:- 22mm x 56mm (7/8" x 2<sup>1/4</sup>" ) medium push-in 15w 240v. Very popular, suits:- Bernina, Singer, Pfaff, Husqvarna etc.

**130-103**:- 22mm x 65mm (7/8" x 2<sup>1/2</sup>" ) long push-in 15w 240v. Suits Elna.

**131-101**:- 20mm x 48mm (3/4" x 1<sup>7/8</sup>" ) small screw-in 15w 240v. Suits:- Japanese machines, some Singer Models and some overlockers/sergers.

**131-102**:- 22mm x 55mm (7/8" x 2<sup>1/4</sup>" ) medium screw-in 15w 240v. Suits:- Brother, Bernina (early models), Celestial, Globe etc.

**131-103**:- 20mm x 65mm (7/8" x 2<sup>7/8</sup>" ) long screw-in 15w 240v. Suits:- early model sewing machines and some electric appliances.



Bayonet (SBC)



Screw (SES)

CODE	TYPE	PRICE
130-101	Hemline Machine Bulb SBC Small 22mmx48mm	£2.50
130-102	Hemline Machine Bulb SBC Medium 22x56mm..	£2.50
130-103	Hemline Machine Bulb SBC Long 22mmx65mm.	£2.50
131-101	Hemline Machine Bulb SES Small 22mmx48mm	£2.50
131-102	Hemline Machine Bulb SES Medium 22x55mm..	£2.50
131-103	Hemline Machine Bulb SES Long 22mmx65mm.	£2.50

# SQUIRES MODEL & CRAFT TOOLS

## PYGMY BULBS

**PYGMY LAMPS 15W** a range of 15W 230V lamps commonly used in control panels indicators, displays, disco lightshows and domestic appliances. The clear lamps are available with either normal domestic type B22d bayonet cap (BC) or E27 edison screw (ES) bases. The coloured lamps all have normal domestic type B22d bayonet cap (BC) bases. Average life 1,000 hours.



CODE	TYPE	PRICE
622-741	Pygmy Lamp Clear 15W BC.....	£0.95
622-782	Pygmy Lamp Clear 15W SBC.....	£0.95
622-743	Pygmy Lamp 15W Clear Screw Base.....	£2.25
622-784	Pygmy Lamp Clear 15W SES.....	£0.95
622-746	Pygmy Lamp Red15W BC.....	£1.69
622-748	Pygmy Lamp Amber 15W BC.....	£1.69
622-749	Pygmy Lamp Green 15W BC.....	£1.65
622-786	Pygmy Lamp 25W Clear Bayonet Base.....	£1.70
622-788	Pygmy Lamp 25W Small Screw Base Clear.....	£1.85

## FRIDGE LAMP

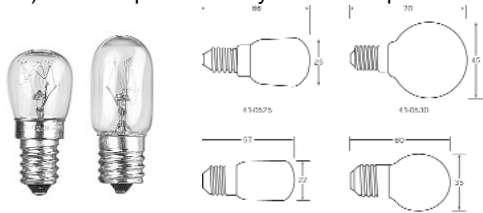
**TUBULAR FRIDGE LAMP 15W LAMP** A replacement lamp suitable for many fridges and other devices. 240V AC 15W. Dimensions 55 x 22mm diameter. SES fitting (screw). Gives a better spread of light than pigmy or other appliance lamps. Internally fused for additional safety. Clear glass bulb, CE approved.



CODE	TYPE	PRICE
11-0000	Fridge Lamp.....	£2.09

## OVEN & MICROWAVE LAMPS

**OVEN AND MICROWAVE LAMPS** replacement lamps suitable for ovens and microwave cookers. The oven bulbs are specifically designed to withstand temperatures (approx 300°C) and have small edison screw (SES) E14 caps. The microwave bulbs have E17 (17mm) screw caps commonly found in Japanese models.



CODE	TYPE	PRICE
622-790	Oven Lamp 230V 25W SES.....	£2.99
622-792	Oven Lamp 240V 40W SES.....	£3.99
622-794	Microwave Lamp 250V 15W E17.....	£2.50
622-796	Microwave Lamp 250V 25W E17.....	£2.50

## OPAL ROUND BULBS

**OPAL ROUND BULBS** a range of opal round lamps available with a range of fittings. Sold individually.



CODE	TYPE	PRICE
622-732	Round Bulb Opal 40W BC.....	£0.99
622-747	Round Bulb Opal 40W SBC.....	£0.99
622-751	Round Bulb Opal 40W SES.....	£1.15

## CANDLE LAMPS

**CANDLE LAMPS** a range of candle lamps available with a range of fittings. Sold individually.



CODE	TYPE	PRICE
622-722	Plain Candle Bulb Clear 40W BC.....	£0.89
622-723	Plain Candle Bulb Clear 60W BC.....	£0.89
622-724	Plain Candle Bulb Clear 40W SBC.....	£0.89
622-727	Plain Candle Bulb Clear 60W SBC.....	£0.89
622-728	Plain Candle Bulb Clear 40W SES.....	£0.89
622-742	Plain Candle Bulb Clear 60W SES.....	£0.89
622-726	Plain Candle Bulb Silverlight 40W BC.....	£0.89
622-729	Plain Candle Bulb Silverlight 60W BC.....	£0.89
622-733	Plain Candle Bulb Silverlight 40W SBC.....	£0.89
622-738	Plain Candle Bulb Silverlight 60W SBC.....	£0.89

## SPOTLIGHT BULBS

**MINI SPOTLIGHT BULBS** a range of mini spotlight bulbs. Sold individually.



CODE	TYPE	PRICE
622-712	Mini Spotlight Bulb R16 40W SES.....	£1.50
622-714	Mini Spotlight Bulb R20 60W ES.....	£1.50

**STANDARD SPOTLIGHT BULBS** a range of standard spotlight bulbs. Sold individually.



CODE	TYPE	PRICE
622-716	Standard Spotlight Bulb R80 60W ES.....	£1.95
622-718	Standard Spotlight Bulb R80 100W ES.....	£1.95

## COMPUTER LIGHT

**COMPUTER LIGHT** the white light from this bulb reduces glare without sacrificing brightness. Filled with krypton gas, sandblasted finish improves light diffusion, reduces glare and reduces eye strain. Ideal for use in any lamp application where reduced glare is desired, such as close proximity to computer or TV screens. Direct replacement for standard GLS lamps. Available in 40W or 60W BC versions.



CODE	TYPE	PRICE
120-132	Computer Light 40W BC.....	£4.99
120-134	Computer Light 60W BC.....	£4.99

**WHEN PLACING AN ORDER PLEASE  
USE THE FULL ORDER CODE  
INCLUDING ANY PUNCTUATION**

# SQUIRES MODEL & CRAFT TOOLS

## DICHROIC LIGHTS

**DICHROIC LOW VOLTAGE LAMPS** A range of 12V spot lights which are safe, easy to use and have low power consumption, providing excellent light output which runs cool making them ideal for display work. Available in a range of beam angles in open or enclosed (protects the reflector and filament bulbs from finger prints) versions.

Technical Specification  
Operating voltage 12V  
Average life 4000 hours



Lamp base	GU5.3	Style	Wattage	Beam	Ansi code
Open	35W	20°			FRA
Open	50W	24°			EXZ
Open	50W	38°			EXN
Closed	20W	36°			-
Closed	35W	40°			FMW+C
Closed	50W	24°			EXZ+Z
Closed	50W	38°			EXN
Closed	50W	60°			FNV-P

CODE	TYPE	PRICE
11-0010	Dichroic Low Voltage Lamp 35W 20°.....	£2.09
11-0012	Dichroic Low Voltage Lamp 50W 24°.....	£2.29
11-0014	Dichroic Low Voltage Lamp 50W 38°.....	£2.29
11-0016	Dichroic Low Voltage Lamp 20W 36°.....	£2.79
11-0018	Dichroic Low Voltage Lamp 35W 40°.....	£2.79
11-0020	Dichroic Low Voltage Lamp 50W 24°.....	£2.79
11-0022	Dichroic Low Voltage Lamp 50W 38°.....	£2.79
11-0024	Dichroic Low Voltage Lamp 50W 60°.....	£2.99

**LONG LIFE DICHROIC LAMPS** A range of low-voltage dichroic lamps with a very long life that offer the user an overall cost reduction due to longer maintenance intervals. 10,000 hours average life, ideal for a wide range of applications and locations. All fitted with standard GX5.3 cap.

Technical Specification  
Voltage Wattage Beam Diameter  
12V 20W 36° 51mm  
12V 35W 38° 51mm  
12V 50W 24° 51mm



CODE	TYPE	PRICE
11-0026	Long Life Dichroic Lamp 12V 20W 36°.....	£4.69
11-0028	Long Life Dichroic Lamp 12V 35W 38°.....	£4.69
11-0030	Long Life Dichroic Lamp 12V 50W 24°.....	£4.69
11-0032	Long Life Dichroic Lamp 12V 50W 36°.....	£4.69

## LED LAMPS

**GU10 MAINS VOLTAGE LED x 12 LAMPS** mains voltage lamps with 12 x bright LEDs, power 1 - 2 watts. They are designed to fit standard GU10 fittings. Lamp life is over 30,000 hours and it has a strengthened glass cover. Available in 4 colours and a white version.



CODE	TYPE	PRICE
624-219	GU10 Mains Voltage LED Lamp - white.....	£7.99
624-222	GU10 Mains Voltage LED Lamp - blue.....	£7.99
624-225	GU10 Mains Voltage LED Lamp - red.....	£6.99
624-228	GU10 Mains Voltage LED Lamp - green.....	£6.99
624-231	GU10 Mains Voltage LED Lamp - yellow.....	£6.99

**GU10 MAINS VOLTAGE LED x 18 LAMPS** mains voltage lamps with 18 x bright LEDs, power 1 - 2 watts.. They are designed to fit standard GU10 fittings. Lamp life is over 30,000 hours and it has a strengthened glass cover. Available in 4 colours and a white version.



CODE	TYPE	PRICE
624-201	GU10 Mains Voltage LED Lamp - white.....	£9.99
624-204	GU10 Mains Voltage LED Lamp - blue.....	£9.99
624-207	GU10 Mains Voltage LED Lamp - red.....	£8.99
624-210	GU10 Mains Voltage LED Lamp - green.....	£8.99
624-213	GU10 Mains Voltage LED Lamp - yellow.....	£8.99

**MULTICOLOUR GU10 LED LAMP** an 18 x LED lamp constructed from 3 groups of 6 LEDs in Red, Green and Blue colours, power 1 - 2 watts. Built-in electronics slowly cycle through the 7 colour combinations to produce Red, Yellow, Green, Cyan, Blue, Magenta and white colours. Each complete cycle takes approximately 40 seconds. Designed to fit standard GU10 fittings.



CODE	TYPE	PRICE
624-216	Multicolour GU10 Mains Voltage LED Lamp.....	£10.99

**GU10 LAMP FITTING** a ceramic lamp fitting for standard GU10 lamp with 100mm heat resistant fly leads (0.75mm<sup>2</sup>).



CODE	TYPE	PRICE
624-237	GU10 Lamp Fitting.....	£1.50

## TUNGSTEN HALOGEN CAPSULE LAMPS

**12V TUNGSTEN HALOGEN CAPSULE LAMPS** M class 12V halogen capsule bulbs with bi-pin bases often encountered in decorative and low voltage lighting as well as in specialist lighting applications. The 20W bulb (type M47) has a G4 base.



CODE	TYPE	PRICE
11-0038	12V Tungsten Halogen Capsule Lamp 20W.....	£0.00

## PROJECTION LAMPS

**PROJECTION LAMPS** A range of halogen bulbs for use in cine projectors, overhead projectors, disco lighting etc. Average life is 50 hours, available in 12 and 24V options. Available in 50, 100, 150 and 250W options.



Technical Specification					
Voltage	Watts	Base	Colour temperature	Dimensions dia x length	Light output (lumens)
24V	250	G6.35	3000K	13 x 55mm	33
12V	50	G6.35	3400K	11 x 44mm	30
12V	100	GY6.35	3300	11 x 44mm	30
24V	150	G6.35	3300	13 x 51mm	30

CODE	TYPE	PRICE
11-0002	Projection Lamp 250W G6.35 Base.....	£5.99
11-0004	Projection Lamp 50W G6.35 Base.....	£3.99
11-0006	Projection Lamp 100W GY6.35 Base.....	£3.99
11-0008	Projection Lamp 150W G6.35 Base.....	£3.99

# SQUIRES MODEL & CRAFT TOOLS

## PUSH LIGHT

**PUSH LIGHT** a battery powered push light. Ideal for cupboards, passage ways and sheds etc. Requires 4 x AA batteries.



CODE	TYPE	PRICE
11-0944	Push Light.....	£2.29

## TABLE MAGNIFYING LAMPS

**MINI FLEXI-NECK TABLE LAMP FLUORESCENT MAGNIFIER** a free standing mini magnifying table lamp with a 12 watt circular daylight tube, giving even light distribution and virtually no heat being emitted. The lamp features a 4" diameter glass lens providing x1.75 magnification. The magnifying head is mounted to flexi-neck allows positioning as required. The lamp has a cover and a clear diffuser which gives protection to the tube. Spare tubes are available. Ideal for craft, hobby, needle work, embroidery and inspection etc.



CODE	TYPE	PRICE
120-091	Mini Table Lamp Fluorescent Magnifier.....	£29.99
120-094	Spare Tube for 120-091/120-093 Magnifier.....	£6.50

**MINI TABLE LAMP FLUORESCENT MAGNIFIER** a free standing mini magnifying table lamp with a 12 watt circular daylight tube, giving even light distribution and virtually no heat being emitted. The lamp features a 4" diameter glass lens providing x1.75 magnification and a x4 magnification close-up lens. The magnifying head is mounted to allow positioning as required. The lamp has a cover and a clear diffuser which gives protection to the tube. Spare tubes are available. Ideal for craft and hobby work, needlework, embroidery and inspection etc.



CODE	TYPE	PRICE
120-093	Mini Table Lamp Fluorescent Magnifier.....	£34.99
120-094	Spare Tube for 120-091/120-093 Magnifier.....	£6.50

**WHEN PLACING AN ORDER PLEASE  
USE THE FULL ORDER CODE  
INCLUDING ANY PUNCTUATION**

## BENCH LAMPS

**MINI ROUND DAYLIGHT FLUORESCENT MAGNIFYING LAMP** a good quality magnifying lamp which is ideal for all hobby and craft work. The lamp is supplied with a 22W circular daylight fluorescent tube providing high light output with an even light distribution and virtually no heat being emitted. The lamp features a 5" diameter glass lens providing x1.75 magnification. The magnifying head is mounted on a spring balanced arm which allows universal positioning. The arms have a good reach of over 80cm. The lamp arms are metal, the lamp head is impact resistant plastic. The lamp is supplied with a strong table clamp. Ideal for extended periods of work and for colour matching if required. Spare tubes are available.



CODE	TYPE	PRICE
120-066	Mini Round D/light Fluorescent Bench Magnifier.	£44.99
120-067	Spare Daylight Fluorescent Tube for 120-066.....	£7.99

**L/C TWIN TUBE FLUORESCENT LAMP** a high quality lamp with 2 x 15W 45cm daylight fluorescent tubes providing high light output with an even light distribution and virtually no heat being emitted. The lamp head is mounted on a spring balanced arm and may be rotated in two planes to allow universal positioning. Robust metal construction and supplied with a robust table clamp. Clamp capacity 57mm. The lamp is ideal for extended periods of work and for when accurate colour matching is required.



CODE	TYPE	PRICE
120-011	L/C Twin Tube Fluorescent Lamp.....	£69.99
120-111	Fluorescent Tube 45cm 15 Watt.....	£8.99

**L/C TRIPPLE TUBE FLUORESCENT LAMP** a high quality lamp with 3 x 14W 45cm daylight fluorescent tubes providing high light output with an even light distribution and virtually no heat being emitted, with the flexibility of being used in either two tube or three tube mode. The lamp head is mounted on a spring balanced arm and may be rotated in two planes to allow universal positioning. Robust metal construction and supplied with a robust table clamp. Clamp capacity 57mm. The lamp is ideal for extended periods of work and for when accurate colour matching is required.



CODE	TYPE	PRICE
120-013	L/C Tripple Tube Fluorescent Lamp.....	£79.99
120-111	Fluorescent Tube 45cm 15 Watt.....	£8.99