

FUSES & CIRCUIT BREAKERS

MAINS FUSES



GLASS FUSES



FUSE HOLDERS



THERMAL CIRCUIT BREAKERS



PANEL MOUNT CIRCUIT BREAKERS



ANTISURGE FUSES	
20MM	2157
32MM	2159
AUTOMOTIVE FUSES	2161
AXIAL LEAD FUSES	2162
CERAMIC FAST BLOW FUSES	
20MM	2156
32MM	2158
CIRCUIT BREAKERS	2163 - 2164
EUROPEAN FUSES	2161 - 2162
FUSE HOLDERS	
20MM	2157 - 2158
25MM	2158
32MM	2160
INDUSTRIAL FUSES	2160
MAINS FUSES	2156
MEDIUM BLOW FUSES 20MM	2156
MINI AUTOMOTIVE FUSES	2160
PLOY SWITCH FUSES	2163
QUICK BLOW FUSES	
20MM	2156
25MM	2158
32MM	2159
SLOW BLOW FUSES	
20MM	2157
32MM	2159
TIME DELAY FUSES	
20MM	2156
25MM	2158
32MM	2159
THERMAL CIRCUIT BREAKERS	2164
ULTRA RAPID FUSES	
20MM	2157
32MM	2159

CON
Z
T
E
N
S

SQUIRES MODEL & CRAFT TOOLS

MAINS FUSES 1 inch mains fuses for use in 13A plugs. Conforming to BS1362. ASTA certified.



CODE	TYPE	PRICE
MF001A	Mains Fuse 1A.....	£0.32
MF002A	Mains Fuse 2A.....	£0.32
MF003A	Mains Fuse 3A.....	£0.29
MF005A	Mains Fuse 5A.....	£0.29
MF007A	Mains Fuse 7A.....	£0.29
MF010A	Mains Fuse 10A.....	£0.29
MF013A	Mains Fuse 13A.....	£0.29

QUICK BLOW FUSES 20 x 5mm a range of quick blow glass fuses manufactured to IEC127 sheet 2. Rated 250V ac. Sold individually.



CODE	TYPE	PRICE
QBF090	Quick Blow Fuse 50mA.....	£0.45
580-340	Quick Blow Fuse 63mA.....	£0.40
QBF100	Quick Blow Fuse 100mA.....	£0.29
580-342	Quick Blow Fuse 125mA.....	£0.29
580-344	Quick Blow Fuse 160mA.....	£0.29
580-345	Quick Blow Fuse 200mA.....	£0.29
QBF110	Quick Blow Fuse 250mA.....	£0.29
580-347	Quick Blow Fuse 315mA.....	£0.29
580-950	Quick Blow Fuse 400mA.....	£0.29
QBF115	Quick Blow Fuse 500mA.....	£0.29
580-349	Quick Blow Fuse 630mA.....	£0.29
580-350	Quick Blow Fuse 800mA.....	£0.29
QBF120	Quick Blow Fuse 1A.....	£0.29
580-351	Quick Blow Fuse 1.25A.....	£0.29
QBF125	Quick Blow Fuse 1.6A.....	£0.29
QBF130	Quick Blow Fuse 2A.....	£0.29
580-952	Quick Blow Fuse 2.5A.....	£0.29
QBF135	Quick Blow Fuse 3.15A.....	£0.29
QBF140	Quick Blow Fuse 4A.....	£0.29
QBF150	Quick Blow Fuse 5A.....	£0.29
QBF155	Quick Blow Fuse 6.3A.....	£0.29
580-954	Quick Blow Fuse 8A.....	£0.29
580-956	Quick Blow Fuse 10A.....	£0.29
580-958	Quick Blow Fuse 13A.....	£0.29
580-960	Quick Blow Fuse 15A.....	£0.29
580-962	Quick Blow Fuse 20A.....	£0.29

MEDIUM BLOW 20 X 5MM GLASS FUSES A range of miniature 20 x 5mm medium blow glass fuses. Rated at 250V. Nickel plated brass end caps.



Technical Specification

Rating	Breaking capacity
250mA to 1A	80A
1.6A to 6.3A	1000A
8A to 10A	300A

CODE	TYPE	PRICE
14-0016	Medium Blow 20x5mm Glass Fuse 250mA.....	£0.33
14-0018	Medium Blow 20x5mm Glass Fuse 500mA.....	£0.33
14-0020	Medium Blow 20x5mm Glass Fuse 1A.....	£0.33
14-0022	Medium Blow 20x5mm Glass Fuse 1.6A.....	£0.33
14-0024	Medium Blow 20x5mm Glass Fuse 2A.....	£0.33
14-0026	Medium Blow 20x5mm Glass Fuse 2.5A.....	£0.33
14-0028	Medium Blow 20x5mm Glass Fuse 3.15A.....	£0.33
14-0030	Medium Blow 20x5mm Glass Fuse 4A.....	£0.33
14-0032	Medium Blow 20x5mm Glass Fuse 5A.....	£0.33
14-0034	Medium Blow 20x5mm Glass Fuse 6.3A.....	£0.33
14-0036	Medium Blow 20x5mm Glass Fuse 8A.....	£0.33
14-0038	Medium Blow 20x5mm Glass Fuse 10A.....	£0.33

CERAMIC FAST BLOW 20 X 5MM FUSES A range of miniature 20 x 5mm fast blow ceramic fuses. Rated at 250V. Nickel plated brass end caps.



Technical Specification

Rating	Breaking capacity
250mA to 10A	1500A
12.5A to 16A	1000A

CODE	TYPE	PRICE
14-0000	Ceramic Quick Blow Fuse 250mA.....	£0.36
CQF510	Ceramic Quick Blow Fuse 500mA.....	£0.30
14-0002	Ceramic Quick Blow Fuse 630mA.....	£0.30
580-352	Ceramic Quick Blow Fuse 800mA.....	£0.30
CQF515	Ceramic Quick Blow Fuse 1A.....	£0.30
580-354	Ceramic Quick Blow Fuse 1.25A.....	£0.30
580-355	Ceramic Quick Blow Fuse 1.6A.....	£0.30
CQF520	Ceramic Quick Blow Fuse 2A.....	£0.30
580-357	Ceramic Quick Blow Fuse 2.5A.....	£0.30
14-0004	Ceramic Quick Blow Fuse 3.15A.....	£0.30
14-0006	Ceramic Quick Blow Fuse 4A.....	£0.30
14-0008	Ceramic Quick Blow Fuse 5A.....	£0.30
14-0010	Ceramic Quick Blow Fuse 6.3A.....	£0.30
CQF540	Ceramic Quick Blow Fuse 8A.....	£0.30
CQF545	Ceramic Quick Blow Fuse 10A.....	£0.30
14-0012	Ceramic Quick Blow Fuse 12.5A.....	£0.30
14-0014	Ceramic Quick Blow Fuse 16A.....	£0.30

ANTISURGE 20 X 5MM FUSES - SPIRAL ELEMENT antisurge (T) fuses fitted with spiral elements. Complies with IEC127, BS4265, standard sheet III. Breaking capacity 35A @ V_n.



CODE	TYPE	PRICE
580-361	Antisurge 20x5mm Spiral Element Fuse 315mA..	£0.22

TIME DELAY FUSES 20 x 5mm a range of time delay glass fuses manufactured to IEC127 sheet 2. Rated 250V ac. These fuses will withstand transient current considerably in excess of normal operating conditions. Sustained overload condition will result in the fuse blowing in the normal fashion. Sold individually.



CODE	TYPE	PRICE
TDF200	Time Delay Fuse 50mA.....	£0.34
TDF205	Time Delay Fuse 100mA.....	£0.30
580-886	Time Delay Fuse 125mA.....	£0.30
580-888	Time Delay Fuse 160mA.....	£0.30
580-890	Time Delay Fuse 200mA.....	£0.30
TDF230	Time Delay Fuse 250mA.....	£0.30
580-892	Time Delay Fuse 315mA.....	£0.30
580-894	Time Delay Fuse 400mA.....	£0.30
TDF250	Time Delay Fuse 500mA.....	£0.30
580-896	Time Delay Fuse 630mA.....	£0.30
580-898	Time Delay Fuse 800mA.....	£0.30
TDF260	Time Delay Fuse 1A.....	£0.30
580-900	Time Delay Fuse 1.2A.....	£0.30
TDF270	Time Delay Fuse 1.6A.....	£0.30
TDF275	Time Delay Fuse 2A.....	£0.30
TDF280	Time Delay Fuse 2.5A.....	£0.30
TDF285	Time Delay Fuse 3.15A.....	£0.30
TDF290	Time Delay Fuse 4A.....	£0.30
TDF295	Time Delay Fuse 5A.....	£0.30
TDF300	Time Delay Fuse 6.3A.....	£0.30
580-902	Time Delay Fuse 8A.....	£0.30
580-904	Time Delay Fuse 10A.....	£0.30
580-906	Time Delay Fuse 12A.....	£0.30
580-908	Time Delay Fuse 16A.....	£0.30

SQUIRES MODEL & CRAFT TOOLS

SLOW BLOW 20 X 5MM GLASS FUSES low blow glass fuses.
Breaking capacity 35A/250V AC.



CODE	TYPE	PRICE
580-642	Slow Blow 20x5mm Glass Fuse 100mA.....	£0.34
580-644	Slow Blow 20x5mm Glass Fuse 200mA.....	£0.34
580-646	Slow Blow 20x5mm Glass Fuse 250mA.....	£0.34
580-648	Slow Blow 20x5mm Glass Fuse 315mA.....	£0.34
26-1052	Slow Blow 20x5mm Glass Fuse 500mA.....	£0.34
580-652	Slow Blow 20x5mm Glass Fuse 630mA.....	£0.34
580-654	Slow Blow 20x5mm Glass Fuse 800mA.....	£0.34
26-1058	Slow Blow 20x5mm Glass Fuse 1A.....	£0.34
580-658	Slow Blow 20x5mm Glass Fuse 1.25A.....	£0.34
26-1062	Slow Blow 20x5mm Glass Fuse 1.6A.....	£0.34
26-1064	Slow Blow 20x5mm Glass Fuse 2A.....	£0.34
26-1066	Slow Blow 20x5mm Glass Fuse 2.5A.....	£0.34
26-1068	Slow Blow 20x5mm Glass Fuse 3.15A.....	£0.34
26-1070	Slow Blow 20x5mm Glass Fuse 4A.....	£0.34
26-1072	Slow Blow 20x5mm Glass Fuse 5A.....	£0.34
26-1074	Slow Blow 20x5mm Glass Fuse 6.3A.....	£0.34
580-674	Slow Blow 20x5mm Glass Fuse 8A.....	£0.34
580-676	Slow Blow 20x5mm Glass Fuse 10A.....	£0.34
580-678	Slow Blow 20x5mm Glass Fuse 12.5A.....	£0.62
580-680	Slow Blow 20x5mm Glass Fuse 16A.....	£0.83

ANTISURGE 20 X 5MM CERAMIC FUSES High breaking capacity ceramic fuses designed to IEC127
.Breaking capacity 1500A/250V.



CODE	TYPE	PRICE
14-0040	Antisurge 20x5mm Ceramic Fuse 125mA.....	£0.36
14-0041	Antisurge 20x5mm Ceramic Fuse 200mA.....	£0.36
14-0042	Antisurge 20x5mm Ceramic Fuse 250mA.....	£0.36
14-0044	Antisurge 20x5mm Ceramic Fuse 315mA.....	£0.36
14-0045	Antisurge 20x5mm Ceramic Fuse 400mA.....	£0.36
14-0046	Antisurge 20x5mm Ceramic Fuse 500mA.....	£0.36
14-0048	Antisurge 20x5mm Ceramic Fuse 1A.....	£0.36
14-0050	Antisurge 20x5mm Ceramic Fuse 2A.....	£0.36
14-0052	Antisurge 20x5mm Ceramic Fuse 3.15A.....	£0.36
14-0054	Antisurge 20x5mm Ceramic Fuse 5A.....	£0.36
14-0056	Antisurge 20x5mm Ceramic Fuse 6.3A.....	£0.36
14-0058	Antisurge 20x5mm Ceramic Fuse 8A.....	£0.36
14-0060	Antisurge 20x5mm Ceramic Fuse 10A.....	£0.36

ULTRA RAPID 20 x 5mm FUSES ultra rapid fuses with high breaking capacity, good mechanical and vibration characteristics with UL recognition (up to 5A). Typical applications include short circuit protection of semiconductors such as triacs, thyristors and diodes. Breaking capacity up to 1500A/250V AC.

Technical Specification

Voltage rating: 250V AC
Breaking capacity: 1500A (>6.3A)
300kA (<6.3A)



Rating:	1.2In		2.75In		4In		10In	
	max.	min.	max.	min.	max.	min.	max.	min.
500mA:	>1hr	15s	50ms	200ms	10ms	<5ms		
1A+:	>1hr	50ms	2ms	15ms	1ms	<2ms		

CODE	TYPE	PRICE
14-5622	Ultra Rapid 20 x 5mm Fuse 1A.....	£1.40
14-5624	Ultra Rapid 20 x 5mm Fuse 1.6A.....	£1.40
14-5626	Ultra Rapid 20 x 5mm Fuse 2A.....	£1.40
14-5628	Ultra Rapid 20 x 5mm Fuse 3.15A.....	£1.40
14-5629	Ultra Rapid 20 x 5mm Fuse 4A.....	£1.40
14-5630	Ultra Rapid 20 x 5mm Fuse 5A.....	£1.40
14-5632	Ultra Rapid 20 x 5mm Fuse 6.3A.....	£1.40
14-5634	Ultra Rapid 20 x 5mm Fuse 8A.....	£1.40
14-5636	Ultra Rapid 20 x 5mm Fuse 10A.....	£1.40

FUSE HOLDERS

20MM PCB FUSE CLIPS tin plated PCB mounting fuse clips for use with 20 x 5mm fuses. Each clip has two mounting legs to suit mounting on 0.1in pitch boards. Clips are rated 5A, two clips are required for each fuse.
Supplied in packs of 5 pairs (10 clips).



CODE	TYPE	PRICE
580-120	20mm PCB Fuse Clips 5 Pairs.....	£0.55

PCB FUSE HOLDERS PCB mounted fuseholders for 20 x 5mm fuses up to a 6.3A rating 250V ac. Available with straight pins or with kinked pins for easy PCB retention. A transparent snap on hood is available. PCB pin spacing 22mm, hole diameter 1.3mm.



CODE	TYPE	PRICE
580-100	PCB Fuseholder Kinked Pin.....	£0.22
580-105	PCB Fuseholder Straight Pin.....	£0.22
580-110	Transparent Cover.....	£0.15

PCB FUSEHOLDER a two part semi-enclosed PCB fuseholder for 20 x 5mm fuses up to a 5A rating 250V ac. Moulded in black glass filled nylon. The fuse carrier has a small window for fuse inspection. The carrier clips securely into the holder. Pin centres 22.5mm.



CODE	TYPE	PRICE
FHPB30	PCB Fuseholder.....	£0.29

CHASSIS MOUNTING 20MM FUSEHOLDER a chassis mounting fuse holder to suit 20 x 5mm fuses up to a 6.3A rating 250V ac. Moulded in a flame retardant material with tinned nickel plated brass.



CODE	TYPE	PRICE
580-130	20mm Chassis Fuseholder.....	£0.45

15A CHASSIS MOUNTING 20MM FUSEHOLDER a chassis mounting fuseholder to suit 20x5mm fuses with single hole fixing and anti-rotation spigot. Terminated by 4.8mm faston terminals.



CODE	TYPE	PRICE
580-378	15A Chassis Mounting 20mm Fuseholder.....	£1.05

VERTICAL PCB FUSEHOLDER A vertical mounting fuseholder for 5x20mm fuses in black self extinguishing polycarbonate for direct vertical mounting to PCBs. The fixing cap may be removed by screwdriver or finger release. Maximum fuse rating 6.3A.



CODE	TYPE	PRICE
580-400	Vertical PCB Fuseholder.....	£0.99

SQUIRES MODEL & CRAFT TOOLS

HORIZONTAL PCB MOUNTING FUSEHOLDER a horizontal PCB mounting fuseholder for 20 x 5mm fuses up to a 6.3A rating. Moulded in black self extinguishing polycarbonate. The fixing cap is removed using a screwdriver or finger release. fuse carrier has a small window for fuse inspection. The carrier clips securely into the holder. Pin centres 22.5mm.



CODE	TYPE	PRICE
580-140	Horizontal PCB Mounting Fuseholder.....	£1.09

FINGER RELEASE 20MM FUSEHOLDER a panel mounting finger release fuseholder with knurled cap, moulded in black self extinguishing polycarbonate. A screwdriver/coin slot is incorporated in the cap. Max fuse rating 6.3A 250V ac.



CODE	TYPE	PRICE
FHFR10	20mm Finger Release Fuseholder.....	£0.89

LOW PROFILE 20MM FUSEHOLDER a low profile panel mounting screwdriver release 20mm fuseholder moulded in black self extinguishing polycarbonate. Max. fuse rating 6.3A.



CODE	TYPE	PRICE
FHLP20	Low Profile Fuseholder.....	£0.99

QUICK RELEASE 20MM FUSEHOLDER a high quality low profile fingerproof fuseholder in black polycarbonate with a quick release bayonet fit fuse cap requiring a flat blade screwdriver to open. The D shape of the body prevents the holder rotating in the panel. Moulded in flame retardant polycarbonate, 4.8mm faston/solder tag termination. Max. fuse rating 6.3A.



CODE	TYPE	PRICE
580-160	Quick Release 20mm Fuseholder.....	£1.25

IN LINE FUSEHOLDER 5 X 20MM an in line fuse holder for holding 5 x 20mm. Plastic housing with bayonet fixing. Fitted with an 18cm wire.



CODE	TYPE	PRICE
580-986	In Line Fuseholder 5 x 20mm.....	£0.79

QUICK BLOW FUSES 25 x 6.3mm 25mm x 6.3mm (1in x 1/4in) quick blow glass fuses. An economical alternative to mains plug-top fuses suitable for use with mains fitted terminal block. Manufactured to IEC127. **Not for use as a replacement fuse for ceramic fuses in 13A plugs.**

Technical Specification

Voltage rating:	250V AC
Breaking capacity:	0-1A 35A/250V AC
	2-3A 100A/250V AC
	5-13A 200A/250V AC



CODE	TYPE	PRICE
14-5540	Quick Blow Fuse 25 x 6.3mm 25mA.....	£0.25
14-5542	Quick Blow Fuse 25 x 6.3mm 500mA.....	£0.25
14-5544	Quick Blow Fuse 25 x 6.3mm 1A.....	£0.25
14-5546	Quick Blow Fuse 25 x 6.3mm 2A.....	£0.25
14-5548	Quick Blow Fuse 25 x 6.3mm 3A.....	£0.25
14-5550	Quick Blow Fuse 25 x 6.3mm 5A.....	£0.25
14-5552	Quick Blow Fuse 25 x 6.3mm 7A.....	£0.25
14-5554	Quick Blow Fuse 25 x 6.3mm 10A.....	£0.25

TIME DELAY 25 x 6.3mm FUSES a range of 25mm x 6.3mm (1in x 1/4in) time delay (T) glass fuses manufactured to IEC127. An economical alternative to mains plug-top fuse. Suitable for use with mains fused terminal block. Not for use as a replacement fuse for ceramic fuses in 13A plugs.

Technical Specification

Voltage rating:	250V AC
Breaking capacity:	<1A 35A/250V AC
	>1A 100A/250V AC
	>3A 200A/250V AC



CODE	TYPE	PRICE
14-5560	Time Delay Fuse 25 x 6.3mm 250mA.....	£0.23
14-5562	Time Delay Fuse 25 x 6.3mm 500A.....	£0.23
14-5564	Time Delay Fuse 25 x 6.3mm 1A.....	£0.23
14-5566	Time Delay Fuse 25 x 6.3mm 2A.....	£0.23
14-5568	Time Delay Fuse 25 x 6.3mm 3A.....	£0.23
14-5570	Time Delay Fuse 25 x 6.3mm 5A.....	£0.23
14-5572	Time Delay Fuse 25 x 6.3mm 7A.....	£0.23
14-5574	Time Delay Fuse 25 x 6.3mm 10A.....	£0.23

IN LINE SCREWFIT FUSEHOLDERS 25mm available either as standard or supplied with rubber seals to achieve an IP66 rating. They have screw terminations and fuse contact is maintained with a spring.

Technical Specification

Voltage rating:	50V AC
Current rating:	10A
Voltage rating:	50V AC
Operating temperature:	-20°C to +70°C
Body material:	polybutene UL94HB



CODE	TYPE	PRICE
14-7687	In-line Screwfit 25mm Fuseholder.....	£2.75
14-7688	In-line Screwfit 25mm Fuseholder IP66.....	£4.25

CHASSIS MOUNTING 25mm FUSEHOLDER a chassis mounting fuseholder for 25 x 6.3mm (1 x 1/4in) fuses e.g. BS1362 plug fuses. Single hole fixing with anti-rotation spigots.

Technical Specification

Overall length:	50mm
Body length:	3mm
Width:	14.3mm
Height:	19.8mm
Maximum rating:	13A 250V AC
Base material:	Glass filled polyester
Clip material:	Phosphor bronze, tin plated
Tab material:	Brass, tin plated



CODE	TYPE	PRICE
14-7685	Chassis Mounting 25mm Fuseholder.....	£2.25

QUICK BLOW FUSES 32MM

CERAMIC QUICK BLOW FUSES 32 x 6.3mm a range of ceramic bodied quick blow 32mm fuses with electroplated end caps. These fuses are ideal for use in applications where a high break capacity is needed. Break capacity 35A/250V (to 1A), 100A/250V (to 3.5A), 200A/250V (above 3.5A). Complies with IEC127



CODE	TYPE	PRICE
14-2192	Ceramic Quick Blow Fuse 32 x 6.3mm 500mA....	£0.38
14-2194	Ceramic Quick Blow Fuse 32 x 6.3mm 1A.....	£0.38
14-2196	Ceramic Quick Blow Fuse 32 x 6.3mm 2A.....	£0.38
14-2198	Ceramic Quick Blow Fuse 32 x 6.3mm 3.15A.....	£0.38
14-2200	Ceramic Quick Blow Fuse 32 x 6.3mm 4A.....	£0.38
14-2202	Ceramic Quick Blow Fuse 32 x 6.3mm 5A.....	£0.38
14-2204	Ceramic Quick Blow Fuse 32 x 6.3mm 6.3A.....	£0.38
14-2208	Ceramic Quick Blow Fuse 32 x 6.3mm 8A.....	£0.38
14-2210	Ceramic Quick Blow Fuse 32 x 6.3mm 10A.....	£0.38

SQUIRES MODEL & CRAFT TOOLS

QUICK BLOW FUSES 32 X 6.3MM a range of 32 x 6.3mm (1¼ x ¼") quick blow glass fuses. CSA and UL approved. Sold individually.



Technical Specification

Voltage rating: 250V AC (10A, 15A, 125V AC)
 Breaking capacity: 35A @Vn
 Manufacturers type: 61NM series
 Operating temperature: 0°C to +35°C

CODE	TYPE	PRICE
580-405	Quick Blow Fuse 32mm 63mA.....	£0.79
580-410	Quick Blow Fuse 32mm 100mA.....	£0.30
580-415	Quick Blow Fuse 32mm 160mA.....	£0.30
580-964	Quick Blow Fuse 32mm 200mA.....	£0.30
580-420	Quick Blow Fuse 32mm 250mA.....	£0.30
580-966	Quick Blow Fuse 32mm 315mA.....	£0.30
580-968	Quick Blow Fuse 32mm 400mA.....	£0.30
580-425	Quick Blow Fuse 32mm 500mA.....	£0.30
580-970	Quick Blow Fuse 32mm 630mA.....	£0.30
580-430	Quick Blow Fuse 32mm 800mA.....	£0.30
580-435	Quick Blow Fuse 32mm 1A.....	£0.30
580-440	Quick Blow Fuse 32mm 1.25A.....	£0.30
580-445	Quick Blow Fuse 32mm 1.6A.....	£0.30
580-450	Quick Blow Fuse 32mm 2A.....	£0.30
580-455	Quick Blow Fuse 32mm 2.5A.....	£0.30
580-972	Quick Blow Fuse 32mm 3A.....	£0.30
580-974	Quick Blow Fuse 32mm 4A.....	£0.30
580-465	Quick Blow Fuse 32mm 5A.....	£0.30
580-976	Quick Blow Fuse 32mm 6A.....	£0.30
580-470	Quick Blow Fuse 32mm 8A.....	£0.30
580-475	Quick Blow Fuse 32mm 10A.....	£0.30
580-978	Quick Blow Fuse 32mm 13A.....	£0.30
580-480	Quick Blow Fuse 32mm 15A.....	£0.30
580-980	Quick Blow Fuse 32mm 20A.....	£0.30

ANTISURGE 32 x 6.3mm CERAMIC FUSES a range of time delay, antisurge (T) ceramic sand filled fuses with high breaking capacity and voltage rating. Breaking capacity of 1500A

Technical Specification

Voltage rating: 500V AC
 Breaking capacity: 1500A at 500V AC
 Voltage drop: 500 to 150mV



CODE	TYPE	PRICE
14-5690	Ceramic Antisurge Fuse 32 x 6.3mm 1A.....	£0.72
14-5692	Ceramic Antisurge Fuse 32 x 6.3mm 2A.....	£0.72
14-5694	Ceramic Antisurge Fuse 32 x 6.3mm 3.15A.....	£0.72
14-5696	Ceramic Antisurge Fuse 32 x 6.3mm 5A.....	£0.72
14-5698	Ceramic Antisurge Fuse 32 x 6.3mm 6.3A.....	£0.72
14-5700	Ceramic Antisurge Fuse 32 x 6.3mm 8A.....	£0.72
14-5702	Ceramic Antisurge Fuse 32 x 6.3mm 10A.....	£0.72
14-5704	Ceramic Antisurge Fuse 32 x 6.3mm 12.5A.....	£1.40
14-5706	Ceramic Antisurge Fuse 32 x 6.3mm 16A.....	£1.40

**POST FREE DELIVERY ON ALL ORDERS
 WITHIN THE UNITED KINGDOM
 MINIMUM ORDER VALUE £15.00**

**You may mix your order from
 ANY of our catalogues**

TIME DELAY FUSES 32 x 6mm. Rated 250V.



CODE	TYPE	PRICE
580-910	Time Delay Fuse 100mA.....	£0.30
580-912	Time Delay Fuse 160mA.....	£0.30
580-914	Time Delay Fuse 250mA.....	£0.30
580-916	Time Delay Fuse 315mA.....	£0.30
580-918	Time Delay Fuse 500mA.....	£0.30
580-920	Time Delay Fuse 630mA.....	£0.30
580-922	Time Delay Fuse 800mA.....	£0.30
580-924	Time Delay Fuse 1A.....	£0.30
580-926	Time Delay Fuse 1.25A.....	£0.30
580-928	Time Delay Fuse 1.6A.....	£0.30
580-930	Time Delay Fuse 2A.....	£0.30
580-932	Time Delay Fuse 2.5A.....	£0.30
580-934	Time Delay Fuse 3.15A.....	£0.30
580-936	Time Delay Fuse 4A.....	£0.30
580-938	Time Delay Fuse 5A.....	£0.30
580-940	Time Delay Fuse 6.3A.....	£0.30
580-942	Time Delay Fuse 8A.....	£0.30
580-944	Time Delay Fuse 10A.....	£0.30
580-946	Time Delay Fuse 12A.....	£0.30
580-948	Time Delay Fuse 15A.....	£0.30

SLOW BLOW GLASS FUSES 32 X 6.3MM 32 x 6.3mm slow blow glass fuses. Breaking capacity 35A/250V.



CODE	TYPE	PRICE
580-688	Slow Blow Glass Fuse 32 x 6.3mm 500mA.....	£0.55
580-690	Slow Blow Glass Fuse 32 x 6.3mm 800mA.....	£0.55
580-692	Slow Blow Glass Fuse 32 x 6.3mm 1A.....	£0.55
580-694	Slow Blow Glass Fuse 32 x 6.3mm 1.25A.....	£0.55
580-696	Slow Blow Glass Fuse 32 x 6.3mm 1.6A.....	£0.55
580-698	Slow Blow Glass Fuse 32 x 6.3mm 2A.....	£0.55
580-700	Slow Blow Glass Fuse 32 x 6.3mm 2.5A.....	£0.55
580-702	Slow Blow Glass Fuse 32 x 6.3mm 3.15A.....	£0.55
580-704	Slow Blow Glass Fuse 32 x 6.3mm 4A.....	£0.55
580-706	Slow Blow Glass Fuse 32 x 6.3mm 5A.....	£0.55
580-708	Slow Blow Glass Fuse 32 x 6.3mm 6.3A.....	£0.55
580-710	Slow Blow Glass Fuse 32 x 6.3mm 8A.....	£0.55
580-712	Slow Blow Glass Fuse 32 x 6.3mm 10A.....	£0.55
580-714	Slow Blow Glass Fuse 32 x 6.3mm 16A.....	£0.55

ULTRA RAPID CERAMIC FUSES 32 x 6.3mm a range of ultra rapid ceramic sand filled fuses with high voltage (700V AC) and breaking capacity (50kA) for use in protection of semiconductors such as triacs, thyristors and diodes as well as use in test probe leads.

Technical Specification

Voltage rating: 700V AC (up to 1.6A)
 500V AC (6.3A upwards)
 Breaking capacity: 50kA
 Voltage drop: 1100 to 300mV

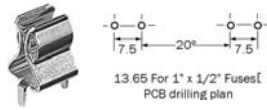


CODE	TYPE	PRICE
14-5640	Ultra Rapid Ceramic Fuse 32 x 6.3mm 1A.....	£2.55
14-5642	Ultra Rapid Ceramic Fuse 32 x 6.3mm 1.6A.....	£2.55
14-5650	Ultra Rapid Ceramic Fuse 32 x 6.3mm 6.3A.....	£2.55
14-5652	Ultra Rapid Ceramic Fuse 32 x 6.3mm 8A.....	£2.55
14-5654	Ultra Rapid Ceramic Fuse 32 x 6.3mm 10A.....	£2.55
14-5656	Ultra Rapid Ceramic Fuse 32 x 6.3mm 12.5A.....	£2.55
14-5658	Ultra Rapid Ceramic Fuse 32 x 6.3mm 16A.....	£2.55

SQUIRES MODEL & CRAFT TOOLS

FUSE HOLDERS 32MM

32 X 6.3MM PCB FUSE CLIPS Tin plated PCB mounting fuse clips suitable for use with 32 x 6.3mm (1¼x1¼") (or 1" x 6.3mm) type fuses. Each clip has two mounting lugs and ear stops. Rated at 15A but dependent on PCB track width. Supplied in a pack of 2.



CODE	TYPE	PRICE
580-555	32 x 6.3mm PCB Fuse Clips Pack of 2.....	£0.30

IN-LINE FUSE HOLDER 6 X 32MM an in-line car type fuseholder with heavy gauge wire tails for use with 32mm fuses.



CODE	TYPE	PRICE
580-145	In-line Fuseholder Car Type 32mm.....	£0.79

CHASSIS MOUNTING 32MM FUSEHOLDER a chassis mounting fuseholder for 6.3 x 32mm fuses.

Single hole fixing with anti-rotation spigot. Terminated by 6.3mm faston terminals.



Technical Specification

Rating	30A 300V
Contacts	High tensile phosphor bronze
Material	UL94V-0 flame retardant phenolic resin
Max operating temperature	+150°C

CODE	TYPE	PRICE
580-560	32mm Chassis Fuseholder 30A.....	£0.95

FINGER RELEASE 32 X 6.3MM FUSEHOLDER a panel mounting 32 x 6.3mm finger release fuseholder moulded in phenolic resin. Max fuse rating 10A 250V AC.



CODE	TYPE	PRICE
580-565	Finger Release Fuseholder 32 x 6.3mm.....	£0.99

HRC 10 X 38MM gL/gG INDUSTRIAL FUSES European style industrial ceramic fuses. Ideal for cable protection and applications where there are no surges to be absorbed.



Technical Specification

Voltage rating	500V AC (32A-400V AC)
Breaking capacity	120kA
Approval Standards	Lloyds register of shipping, Bureau Veritas In accordance with IEC 269-2-1, NFC 60,200, 63,210, 63,211 and UNE 21,103

CODE	TYPE	PRICE
580-840	HRC 10x38mm gL/gG Industrial Fuse 2A.....	£0.83
580-842	HRC 10x38mm gL/gG Industrial Fuse 4A.....	£0.83
580-844	HRC 10x38mm gL/gG Industrial Fuse 6A.....	£0.83
580-846	HRC 10x38mm gL/gG Industrial Fuse 10A.....	£0.83
580-848	HRC 10x38mm gL/gG Industrial Fuse 16A.....	£0.83
580-850	HRC 10x38mm gL/gG Industrial Fuse 20A.....	£0.83
580-852	HRC 10x38mm gL/gG Industrial Fuse 25A.....	£0.83
580-854	HRC 10x38mm gL/gG Industrial Fuse 32A.....	£0.83

HRC 10 X 38MM aM (MOTOR RATED) INDUSTRIAL FUSES European style industrial fuses. Ideal for applications where an initial surge has to be absorbed.(eg motor starts)



Technical Specification

Voltage rating	500V AC (25A, 32A-400V AC)
Breaking capacity	120kA
Approval Standards	Lloyds register of shipping, Bureau Veritas In accordance with IEC 269-2-1, NFC 60,200, 63,210, 63,211 and UNF 21,103

CODE	TYPE	PRICE
580-856	HRC 10x38mm aM Industrial Fuse 2A.....	£0.99
580-858	HRC 10x38mm aM Industrial Fuse 4A.....	£0.99
580-860	HRC 10x38mm aM Industrial Fuse 6A.....	£0.99
580-862	HRC 10x38mm aM Industrial Fuse 10A.....	£0.99
580-864	HRC 10x38mm aM Industrial Fuse 16A.....	£0.99
580-866	HRC 10x38mm aM Industrial Fuse 20A.....	£0.99
580-868	HRC 10x38mm aM Industrial Fuse 25A.....	£0.99
580-870	HRC 10x38mm aM Industrial Fuse 32A.....	£0.99

HRC ULTRA RAPID FUSES FOR DIGITAL MEASURING INSTRUMENTS these fuses are especially suitable for use with digital measuring instruments such as digital multimeters etc. Available in 440mA, 10 x 35mm and 11A, 10 x 38mm types. Ultra-rapid response.

Technical Specification

Current rating	Size (mm)	Class	Rated voltage	Rated breaking capacity	Power loss
0.44A	10 x 35	aR	1000V AC/DC	30kA	0.2W
11A	10 x 38	gR	1000V AC/DC	30kA	1.6W



CODE	TYPE	PRICE
14-5790	440MA HRC Ultra Rapid Fuse.....	£9.99
14-5791	11MA HRC Ultra Rapid Fuse.....	£9.99

MINI AUTOMOTIVE FUSES a range of quick blow mini blade type fuses popular in automotive applications and compact electronic equipment. Colour coded for easy identification of value. Sold individually.



Technical Specification

Voltage rating	32V	Breaking capacity	1000A
----------------	-----	-------------------	-------

CODE	TYPE	PRICE
580-276	Mini Automotive Fuse 3A Violet.....	£0.25
580-277	Mini Automotive Fuse 5A Tan.....	£0.25
580-278	Mini Automotive Fuse 7.5A Brown.....	£0.25
580-279	Mini Automotive Fuse 10A Red.....	£0.25
580-280	Mini Automotive Fuse 15A Blue.....	£0.25
580-281	Mini Automotive Fuse 20A Yellow.....	£0.25
580-282	Mini Automotive Fuse 25A Clear.....	£0.25
580-283	Mini Automotive Fuse 30A Green.....	£0.25

MINI AUTOMOTIVE FUSEHOLDER a PCB mounting fuseholder suitable for use with the mini automotive range of fuses. Rugged blade design withstands shock and vibration and holds the fuse securely, even after multiple insertions. Nickel plated contacts rated 15A 250V max. Sold individually.

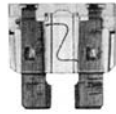


CODE	TYPE	PRICE
580-284	Mini Automotive Fuseholder.....	£0.45

**FREE PARKING FOR 2 HOURS
OUTSIDE OF OUR SHOP**

SQUIRES MODEL & CRAFT TOOLS

AUTOMOTIVE FUSES a range of quick blow blade type fuses designed primarily for use in automotive applications and becoming common in portable equipment. Rated 32V dc with a breaking capacity of 1000A. Colour coded for easy identification.



CODE	TYPE	Colour	PRICE
AF2300	Automotive Fuse 3A	Violet.....	£0.25
AF2305	Automotive Fuse 5A	Tan.....	£0.25
AF2310	Automotive Fuse 7.5A	Brown.....	£0.25
AF2315	Automotive Fuse 10A	Red.....	£0.25
AF2320	Automotive Fuse 15A	Blue.....	£0.25
AF2325	Automotive Fuse 20A	Yellow.....	£0.25
AF2330	Automotive Fuse 25A	Clear.....	£0.25
AF2335	Automotive Fuse 30A	Green.....	£0.25
580-982	Automotive Fuse 40A	Red.....	£0.25

AUTOMOTIVE FUSE HOLDERS for use with automotive fuses for direct mounting to printed circuit boards, vertical or horizontal mounting types. Rated at 35A at 32V dc.



CODE	TYPE	PRICE
AFH360	Automotive Fuseholder Vertical.....	£0.99
AFH365	Automotive Fuseholder Horizontal (R/Angle).....	£1.06

CAR FUSE HOLDER a plastic fuse holder with cover for blade type car fuses.



CODE	TYPE	PRICE
580-988	Car Fuse Holder.....	£1.49

20A IN-LINE AUTOMOTIVE FUSEHOLDER WITH LED An in-line automotive fuseholder incorporating a two part PVC assembly with safety strap. Current rating 20A 12V-24V DC. LED on fuseholder lights to show fuse is good. Suitable for standard quick blow blade type fuses. Access to the fuse is by means of a snap-fit lid on top of the holder. Damp proof and water proof. Supplied with 110mm of 14AWG red insulated wire each side of fuseholder. Dimensions 46(L) x 35mm (W).



Technical Specification

Voltage rating	20A 12V to 24V DC
Contact resistance	50mohm max.
Insulation resistance	500V DC 100M ohm min
Dielectric strength	1000V AC, 1 minute
Operating temperature	-20°C to +80°C

CODE	TYPE	PRICE
14-0136	20A In-line Automotive Fuseholder With LED.....	£1.99

AUTOMOTIVE FUSEHOLDERS PCB mounting holders for automotive type fuses, available singly or pre-assembled for reduced PCB assembly time. The rugged design withstands the rigors of shock and vibration and holds the fuse securely, even after multiple insertions. The single clip is supplied in packs of 2.



CODE	TYPE	PRICE
580-273	Auto Fuse Clip (pk of 2).....	£0.50
580-274	Auto Fuse Holder.....	£1.05

FUSE SPLICES an in-line fuseholder for use with automotive type fuses. The holder is placed over the cable and then crimped with pliers.



CODE	TYPE	Wire Size mm ²	PRICE
CC0195	In-line Fuse Holder Single	1.0-2.0.....	£0.90

DIN RAIL 10 x 38mm FUSEHOLDER a DIN Rail mounting fuseholders in single pole configuration. Accommodates 10 x 38mm industrial fuses, also suitable for North American Class CC and midget 1½ x 13/32 fuses and allows fuse replacement without tools. Incorporating an operating handle for non-load disconnection and electrical isolation. Approved by Lloyds Register of Shipping, Bureau Veritas, UL/CSA. Accords with IEC269, IEC 947, NFC 60249, 63001, 63210, VDE 0636, UNE 20129.

Technical Specification

Voltage rating:	690V AC (500V AC – 25A)
	(400V AC – 32A)



CODE	TYPE	PRICE
14-5880	Single Pole DIN Rail Fuseholder.....	£5.50

INSULATING BOOT designed to fit panel mounting fuseholders and provide insulation from shock on rear of fuseholder. 3 sizes available, made from PVC and flame retardant to UL94V-0.

	Overall length	Overall diameter
Small:	27.6mm	12.3mm
Medium:	38.1mm	13.5mm
Large	58.0mm	15.5mm



CODE	TYPE	PRICE
14-0186	Insulating Boot Small.....	£0.58
14-0187	Insulating Boot Medium.....	£0.89
14-0188	Insulating Boot Large.....	£1.05

QUICK BLOW EUROPEAN SUBMINIATURE FUSES european style rapid lead fuses which significantly reduce PCB area when compared to conventional 20x5mm fuses. The fuse can be soldered directly to a printed circuit board or alternatively plugged into a two pin PCB socket. Only 8.5mm in diameter and 8.45mm in height the fuses are suited to auto insertion, wave soldering and board washing processes. Quick blow (F) characteristics.



Technical Specification

Rated voltage	250V ac	
Breaking capacity	35A @ 250V ac or 10I _n	
Time/current characteristics	% of rating	Time
	210%	30 minutes max
	275%	0.01 sec min 3 sec max
	400%	0.003 sec min 0.3 sec max

CODE	TYPE	PRICE
580-394	Quick Blow European Sub Mini Fuse 200mA.....	£0.43
580-403	Quick Blow European Sub Mini Fuse 2A.....	£0.43
580-432	European PCB Fuseholder.....	£0.65

**FREE PARKING FOR 2 HOURS
OUTSIDE OF OUR SHOP**

SQUIRES MODEL & CRAFT TOOLS

ANTISURGE EUROPEAN SUBMINIATURE FUSES European style radial lead fuses which significantly reduce PCB area when compared to conventional 20x5mm fuses. Only 8.5mm in diameter and 8.45mm in height the fuses are suited to auto insertion, wave soldering and board washing processes. The fuses can be soldered directly to a printed circuit board or alternatively plugged into a two pin PCB socket. Time tag (T) characteristics.



Technical Specification

Rated voltage	250V ac	
Breaking capacity	35A @ 250V ac or 10I _n	
Time/current characteristics	% of rating	Time
	210%	2 minutes max
	275%	0.04 sec min 10 sec max
	400%	0.15 sec min 3 sec max

CODE	TYPE	PRICE
580-409	Antisurge European Sub Mini Fuse 50mA.....	£0.43
580-411	Antisurge European Sub Mini Fuse 63mA.....	£0.43
580-412	Antisurge European Sub Mini Fuse 100mA.....	£0.43
580-416	Antisurge European Sub Mini Fuse 200mA.....	£0.43
580-417	Antisurge European Sub Mini Fuse 250mA.....	£0.43
580-418	Antisurge European Sub Mini Fuse 315mA.....	£0.43
580-426	Antisurge European Sub Mini Fuse 2A.....	£0.43
580-427	Antisurge European Sub Mini Fuse 2.5A.....	£0.43
580-432	European PCB Fuseholder.....	£0.65

AXIAL LEAD FAST BLOW FUSES A range of fast acting micro fuses. Rated at 125V. tinned copper leads.



Technical Specification

Dimensions	7.1 x 3.18mm
Lead length	38.1mm
Temperature range	-55°C to +125°C
Operating time	100% testing current 4hr. min. 200% testing current 5s max

CODE	TYPE	PRICE
14-0096	Axial Lead 7.1 x 3.18mm Fast Blow Fuse 500mA	£0.49
14-0100	Axial Lead 7.1 x 3.18mm Fast Blow Fuse 1.5A....	£0.49
14-0102	Axial Lead 7.1 x 3.18mm Fast Blow Fuse 2A.....	£0.49
14-0104	Axial Lead 7.1 x 3.18mm Fast Blow Fuse 3A.....	£0.49
14-0106	Axial Lead 7.1 x 3.18mm Fast Blow Fuse 5A.....	£0.49
14-0108	Axial Lead 7.1 x 3.18mm Fast Blow Fuse 10A.....	£0.49
14-0112	Axial Lead 7.1 x 3.18mm Fast Blow Fuse 15A.....	£0.49

AXIAL LEAD SLOW BLOW FUSES A range of slow blow micro fuses. Rated at 125V. tinned copper leads.



Technical Specification

Dimensions	7.1 x 3.18mm
Lead length	38.1mm
Temperature range	-55°C to +125°C
Operating time	100% testing current 4hr. min. 200% testing current 30s max

CODE	TYPE	PRICE
14-0116	Axial Lead 7.1 x 3.18mm Slow Blow Fuse 1A.....	£0.65
14-0118	Axial Lead 7.1 x 3.18mm Slow Blow Fuse 2A.....	£0.65
14-0120	Axial Lead 7.1 x 3.18mm Slow Blow Fuse 3A.....	£0.65
14-0122	Axial Lead 7.1 x 3.18mm Slow Blow Fuse 5A.....	£0.65
14-0124	Axial Lead 7.1 x 3.18mm Slow Blow Fuse 7A.....	£0.65

**FREE PARKING FOR 2 HOURS
OUTSIDE OF OUR SHOP**

MICRO MINIATURE AXIAL FUSES Micro miniature epoxy coated axial fuses available in two options. FF - very fast acting or TD - time delay. Leads are tinned plated copper for PCB mounting. Rating of fuse is printed on fuse body.



Technical Specification

Voltage rating	125V
Temperature range	-55°C to +125°C
Body size	2.4 x 7.0mm

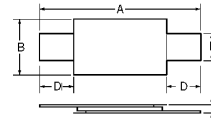
CODE	TYPE	PRICE
Quick Blow		
580-736	Micro Miniature Axial Fuse 125mA.....	£0.33
580-738	Micro Miniature Axial Fuse 250mA.....	£0.33
580-740	Micro Miniature Axial Fuse 500mA.....	£0.33
580-742	Micro Miniature Axial Fuse 1A.....	£0.33
580-744	Micro Miniature Axial Fuse 1.5A.....	£0.33
580-746	Micro Miniature Axial Fuse 2.5A.....	£0.33
580-748	Micro Miniature Axial Fuse 3A.....	£0.33
580-750	Micro Miniature Axial Fuse 5A.....	£0.33

Time Delay

580-752	Micro Miniature Axial Fuse 250mA.....	£0.53
580-754	Micro Miniature Axial Fuse 500mA.....	£0.53
580-756	Micro Miniature Axial Fuse 1A.....	£0.53
580-758	Micro Miniature Axial Fuse 1.5A.....	£0.53
580-760	Micro Miniature Axial Fuse 2.5A.....	£0.53
580-762	Micro Miniature Axial Fuse 3A.....	£0.53
580-764	Micro Miniature Axial Fuse 5A.....	£0.53

CIRCUIT BREAKERS

MULTIFUSE STRAP RESETTABLE FUSES a range of strap style resettable fuses suited to protection of battery packs. Provides overcurrent protection with 125°C trip temperature. Weldable nickel terminals.



Technical Specification

IHOLD	ITRIP	Initial resistance		Max time to trip	Dimensions(max)									
		A	A		Vmax	Min.	Max.	Amps	Secs	A	B	C	D	F
1.2	2.7	15	0.085	0.16	6	5.0	22.1	5.2	1.0	7.5	4.1			
1.5	3.0	15	0.05	0.09	8	5.0	23.4	11.0	1.1	5.5	5.4			

CODE	TYPE	PRICE
580-570	Resettable Strap Fuse 1.2A.....	£1.29
580-575	Resettable Strap Fuse 1.5A.....	£1.29

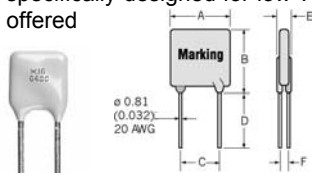
**POST FREE DELIVERY
ON ALL ORDERS WITHIN
THE UNITED KINGDOM**

MINIMUM ORDER VALUE £15.00

**You may mix your order from
ANY of our catalogues**

SQUIRES MODEL & CRAFT TOOLS

LOW VOLTAGE POLYSWITCH RESETTABLE FUSES a new generation of resettable fuses specifically designed for low voltage applications (up to 16V) which offered improved performance over existing device families in a smaller package UL, CSA and TUV approved. Sold individually.



Technical Specification

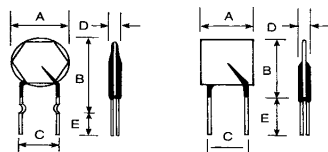
Maximum working voltage 16V
 Maximum Interrupt current 100A
 Maximum surface temperature 125°C in tripped condition
 Operating temperature -40° to +85°C

I Hold	I Trip	A	B	C	D	E	lead	pd	Order
A*	A**	Max	Max	Max	Min	Max	dia	(W)	Code
3.0	5.1	7.1	10.2	5.1	4.6	3.0	1.0	2.3	580-285
4.0	6.8	8.9	12.8	5.1	4.6	3.0	1.0	2.4	580-286
5.0	8.5	10.4	13.5	5.1	4.6	3.0	1.0	2.6	580-287
6.0	10.2	10.7	17.1	5.1	4.6	3.0	1.0	2.8	580-288
9.0	15.3	14.0	20.8	5.1	4.6	3.0	1.0	3.3	580-290
11.0	18.7	17.5	25.1	5.1	4.6	3.0	1.0	3.7	580-291
12.0	20.4	17.5	28.0	10.2	4.6	3.0	1.0	4.2	580-292
14.0	23.8	27.9	27.9	10.2	4.6	3.0	1.0	4.6	580-293

* Hold current. Maximum current at which device will not trip at 20°C
 ** Trip current. Minimum current at which device will always trip at 20°C

CODE	TYPE	PRICE
580-285	Low Voltage Polyswitch 3.0A.....	£1.50
580-286	Low Voltage Polyswitch 4.0A.....	£1.60
580-287	Low Voltage Polyswitch 5.0A.....	£1.60
580-288	Low Voltage Polyswitch 6.0A.....	£1.99
580-290	Low Voltage Polyswitch 9.0A.....	£1.99
580-291	Low Voltage Polyswitch 11.0A.....	£2.45
580-292	Low Voltage Polyswitch 12.0A.....	£2.75
580-293	Low Voltage Polyswitch 14.0A.....	£2.89

POLYSWITCH RESETTABLE FUSES. The Raychem Polyswitch is a resettable device that performs like a fuse under overcurrent conditions, but will reset when the overload has been rectified. Under normal circuit conditions the Polyswitch will demonstrate a similar resistance to that of a conventional fuse, when an overcurrent condition is reached, the polyswitch heats up to its trip temperature. The increase in resistance normally results in no damage to the equipment whilst the remaining current keeps the Polyswitch above its trip temperature. The Polyswitch is reset by removing the power source or the fault, reset time is around 20 seconds and then normal operation can resume. Trip times are similar to a slow blow fuse. Sold individually



Technical Specification

I Hold	I Trip	Pack-	A	B	C	D	E	Lead	Manufact	
A*	A**	Vrms	age	max.	max.	max.	min.	size	Part No.	
0.10	0.20	60	1	7.4	12.7	5.1	3.0	7.6	0.6	RXE010
0.17	0.24	60	1	7.4	12.7	5.1	3.0	7.6	0.6	RXE017
0.20	0.40	60	1	7.4	12.7	5.1	3.0	7.6	0.6	RXE020
0.25	0.50	60	1	7.4	12.7	5.1	3.0	7.6	0.6	RXE025
0.30	0.60	60	1	7.4	13.0	5.1	3.0	7.6	0.6	RXE030
0.40	0.80	60	1	7.6	13.5	5.1	3.0	7.6	0.6	RXE040
0.50	1.00	60	1	7.9	13.7	5.1	3.0	7.6	0.6	RXE050
0.66	1.30	60	1	9.7	14.5	5.1	3.0	7.6	0.6	RXE065
0.90	1.80	60	1	11.7	15.7	5.1	3.0	7.6	0.6	RXE090
1.10	2.2	30	2	6.6	14.2	5.1	3.0	7.6	0.8	RUE110
1.35	2.7	30	2	8.9	13.5	5.1	3.0	7.6	0.8	RUE135
1.6	3.2	30	2	10.2	15.7	5.1	3.0	7.6	0.8	RUE160
1.85	3.7	30	2	10.2	15.7	5.1	3.0	7.6	0.8	RUE185
2.50	5.0	30	2	11.4	18.3	5.1	3.0	7.6	0.8	RUE250
3.0	6.0	30	2	11.4	17.3	5.1	3.0	7.65	0.8	RUE300
4.0	8.0	30	2	14.0	20.1	5.1	3.0	7.6	0.8	RUE400
5.0	10.0	30	2	14.0	24.9	10.2	3.0	7.65	0.8	RUE500
6.0	12.0	30	2	16.5	24.9	10.2	3.0	7.6	0.8	RUE600
7.0	14.0	30	2	19.1	26.7	10.2	3.0	7.6	0.8	RUE700
8.0	16.0	30	2	21.6	29.2	10.2	3.0	7.6	0.8	RUE800

* I Hold - Current at which fuse will not trip
 ** I Trip - Current at fuse will trip

CODE	TYPE	PRICE
RXE010	Polyswitch 0.1A.....	£1.40
RXE017	Polyswitch 0.17A.....	£1.45
RXE020	Polyswitch 0.2A.....	£1.45
RXE025	Polyswitch 0.25A.....	£1.45
RXE030	Polyswitch 0.3A.....	£1.45
RXE040	Polyswitch 0.4A.....	£1.50
RXE050	Polyswitch 0.5A.....	£1.55
RXE065	Polyswitch 0.65A.....	£1.60
RXE090	Polyswitch 0.9A.....	£1.60
RUE110	Polyswitch 1.1A.....	£1.60
RUE135	Polyswitch 1.35A.....	£1.60
RUE160	Polyswitch 1.6A.....	£1.70
RUE185	Polyswitch 1.85A.....	£1.99
RUE250	Polyswitch 2.5A.....	£1.99
RUE300	Polyswitch 3.0A.....	£2.10
RUE400	Polyswitch 4.0A.....	£2.50
RUE500	Polyswitch 5.0A.....	£2.60
RUE600	Polyswitch 6.0A.....	£2.70
RUE700	Polyswitch 7.0A.....	£2.90
RUE800	Polyswitch 8.0A.....	£2.99

SURFACE MOUNT POLYSWITCH RESETTABLE FUSES a range of surface mount resettable fuses in a compact package ideally suited to high density applications. Applications include computer peripherals, LANs, PCMCIA cards, USB ports etc. UL, CSA and TUV approved

Technical Specification

Maximum interrupt current: 40A (0.2A 10A)
 Maximum surface temperature: 125°C in tripped condition
 Operating temperature: -40°C to +85°C



I hold	I trip	VDC	Package	Length	Height	Width	PD
A*	A**	max.		max.	max.	max.	(w)
0.2	0.4	30	1	4.73	3.41	0.81	0.8
0.75	1.5	13.2	2	4.73	3.41	0.62	0.8
1.1	2.2	6	2	4.73	3.41	0.62	0.8

* Hold current. Maximum current at which the device will not trip at 20°C
 ** Trip current. Minimum current at which the device will always trip at 20°C

CODE	TYPE	PRICE
14-1560	S/Mount Polyswitch Resettable Fuse 0.2A.....	£0.69
14-1568	S/Mount Polyswitch Resettable Fuse 0.75A.....	£0.69
14-1572	S/Mount Polyswitch Resettable Fuse 1.1A.....	£0.69

THERMAL PCB MOUNTING CIRCUIT BREAKERS a range of miniature auto-resetting circuit breakers suitable for protecting equipment against over-current conditions, eg audio speakers, amplifiers, power supplies etc. Moulded in phenolic resin with PCB pins on a 7.5mm pitch. Dims 22 x 12.6 x 6mm. Rated at 250V ac. Supplied individually.

Technical Specification

Current rating	Max Interrupt current	Trip time overload	300% current	Internal resistance
1.0A	20A	<30s	<5s	<150m
1.6A	20A	<30s	<5s	<100m
2.2A	20A	<30s	<5s	<75m
3.0A	30A	<30s	<5s	<35m
5.0A	50A	<30s	<5s	<30m



CODE	TYPE	PRICE
580-200	Thermal PCB Circuit Breaker 1A.....	£2.85
580-205	Thermal PCB Circuit Breaker 1.6A.....	£2.85
580-210	Thermal PCB Circuit Breaker 2.2A.....	£2.85
580-215	Thermal PCB Circuit Breaker 3A.....	£2.85
580-220	Thermal PCB Circuit Breaker 5A.....	£2.85

**FREE PARKING FOR 2 HOURS
 OUTSIDE OF OUR SHOP**

CONTINUED OVER

SQUIRES MODEL & CRAFT TOOLS

PANEL MOUNTING CIRCUIT BREAKERS a range of panel mounting thermal circuit breakers offered in a wide range of rated trip currents. Single pole push to reset offering a contact life in excess of 500 trips (200% of rated load)

Panel cut-out 11.5mm. Fitted with 6.35 x 0.8mm fast-on terminations.

A waterproof cover is also available.



Technical Specification

Contact rating	250V AC		UL
Interrupt capacity	1000A at 120/250V		
Trip levels:- Overload	3 - 4A models	5 - 30A models	
100%	No trip	No trip	
150%	<1 hour	<1 hour	
200%	10 - 55s	6.30s	
400%	3 - 1.4s	1.6 - 4.5s	
600%	1.4 - 7s	0.6 - 1.7s	
1000%	0.3 - 3.5s	0.15 - 0.65s	

CODE	TYPE	PRICE
580-301	Thermal Circuit Breaker 3A.....	£3.50
580-302	Thermal Circuit Breaker 4A.....	£3.50
580-303	Thermal Circuit Breaker 5A.....	£3.50
580-304	Thermal Circuit Breaker 6A.....	£3.50
580-305	Thermal Circuit Breaker 7A.....	£3.50
580-306	Thermal Circuit Breaker 8A.....	£3.50
580-307	Thermal Circuit Breaker 10A.....	£3.50
580-308	Thermal Circuit Breaker 15A.....	£3.50
580-309	Thermal Circuit Breaker 20A.....	£3.50
580-310	Thermal Circuit Breaker 25A.....	£3.50
580-311	Thermal Circuit Breaker 30A.....	£3.50
580-312	Waterproof Cover for 580-301 - 311.....	£1.15

PANEL MOUNTING CIRCUIT BREAKERS Panel mounting thermally operated circuit breakers. Single pole push to reset provides reliable trip-free operation on overloads and short circuits. A white indicator band on the button shows the tripped condition. Terminated by 6.3mm fast connect tabs.



Technical Specification

Contact rating	250VAC
Breaking capacity max.	6x In 6A 8x In =>6A
Dimensions	27.5mm x 19mm
Panel hole	10.2mm x 9.4mm
Operational Life	1000 cycles @ 2x In
Operational temperature	+60°C max

CODE	TYPE	PRICE
581-000	Panel Mounting Circuit Breaker 1A.....	£4.50
581-002	Panel Mounting Circuit Breaker 2A.....	£4.50
581-004	Panel Mounting Circuit Breaker 3A.....	£4.50
581-006	Panel Mounting Circuit Breaker 4A.....	£4.50
581-008	Panel Mounting Circuit Breaker 5A.....	£4.50
14-0126	Panel Mounting Circuit Breaker 6A.....	£4.50
14-0128	Panel Mounting Circuit Breaker 7A.....	£4.50
14-5214	Dust Cap.....	£1.25

**WHEN PLACING AN ORDER PLEASE
USE THE FULL ORDER CODE
INCLUDING ANY PUNCTUATION**

PANEL MOUNTING CIRCUIT BREAKERS a range of miniature panel mounting thermal circuit breakers. With single pole action manually resettable with a release limit of 102/130% of nominal current rating. 2.8mm tab termination, panel cut-out 9.5mm, dimensions 19.0(H) x 11.0(W) x 27.6(D). Approved to UL/CSA, VDE, SEMKO, NEMKO.

Technical Specification

Voltage rating:	250V AC, 28V DC
Max.interrupt rating:	3A, 6 x rating >2A, 5 x rating
Typical Life:	>3A, 5000ops. >4A 1000ops.
Operating Temp:	-20°C to +60°C
Int. Resistance:	0.9Ω 0.25Ω 0.11Ω 0.07Ω 0.05Ω 0.05Ω



CODE	TYPE	PRICE
PCB175	1A Panel Mounting Circuit Breaker.....	£11.99
PCB180	2A Panel Mounting Circuit Breaker.....	£11.99
PCB185	3A Panel Mounting Circuit Breaker.....	£11.99
PCB195	5A Panel Mounting Circuit Breaker.....	£11.99
PCB200	6A Panel Mounting Circuit Breaker.....	£11.99
PCB205	7A Panel Mounting Circuit Breaker.....	£11.99

ROCKER SWITCH CIRCUIT BREAKERS Non-illuminated rocker switch circuit breakers which trips to the off position under overload conditions. These nylon rocker switches have a red indicator band on the switch which is visible when the circuit breaker is in the reset state.

Designed for snap-in panel mounting with 8mm fast connect tabs to allow speedy assembly.



Technical Specification

Contact rating	250VAC
Interrupt capacity	1000A
Dimensions	32mm x 22mm x 13mm
Panel hole	28.5mm x 13.5mm
Trip levels	
100%	No trip
135%	in 1 hour
200%	4-40 secs.
300%	1.2-12 secs
400%	0.6-5 secs
500%	0.4-2.8 secs
600%	0.3-1.8 secs

CODE	TYPE	PRICE
14-0130	Rocker Switch Circuit Breaker 5A.....	£4.99
14-0132	Rocker Switch Circuit Breaker 10A.....	£4.99

**POST FREE DELIVERY
ON ALL ORDERS WITHIN
THE UNITED KINGDOM**

MINIMUM ORDER VALUE £15.00

**You may mix your order from
ANY of our catalogues**