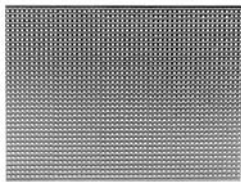


PRINTED CIRCUIT BOARD EQUIPMENT

STRIP BOARD



PROJECT BOARDS



PCB ETCHANT



UV EXPOSURE UNIT



PCB HOLDER



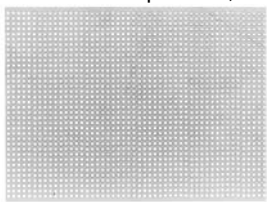
ARTWORK AIDS	2215
BRASS BRUSH	2217
COPPER CLAD BOARD	2214
DRILL KIT	2218
DRILL STAND	2218
ETCH RESIST PEN	2214
ETCHING EQUIPMENT	2215 - 2217
FOTOBOARD	2214
JUMPER LINKS	2213 - 2214
LIGHT BOXES	2218
MAG TAGS	2212
MATRIX BOARD	2212
MODEL RAILWAY ELECTRICS BOOK	2218
PCB HOLDER	2218
PCB MOUNTING STRIPS	2218
PCB PROCESSING TANK	2217
POLIFIX BLOCK	2217
PROTOBLOC BOARDS	2212 - 2213
PROTOTYPING BOARDS	2212
SCRATCH BRUSH	2217
SELF ADHESIVE COPPER TAPE	2212
STRIP BOARD	2212
STRIP BOARD TRACK CUTTER	2212
TERMINAL PINS	2212
UV EXPOSURE UNIT	2217

CONTESTS

SQUIRES MODEL & CRAFT TOOLS

MATRIX BOARD

MATRIX BOARD matrix board, similar to strip board, with holes punched on a 0.1" matrix but without the copper strips on the underside. Manufactured in SRBP and therefore may be easily cut to down to any size that is required.



CODE	TYPE	PRICE
601-530	Matrix Board 95 x 127mm. 36 x 50 Holes.....	£2.35

STRIP BOARD

STRIP BOARD a range of sizes of fully pierced stripboard used for prototype, development work and hobby work etc. it can be readily cut down to any size. Provides a simple base on which to build circuits with interconnections formed by copper strips which may be cut as desired, manufactured from copper clad laminated board and the holes are pierced on a 0.1" pitch.



CODE	TYPE	PRICE
601-500	Stripboard 0.1" 25 x 64mm.....	£0.39
601-505	Stripboard 0.1" 64 x 95mm.....	£1.29
601-510	Stripboard 0.1" 95 x 127mm.....	£2.49
601-515	Stripboard 0.1" 95 x 432mm.....	£8.50
601-520	Stripboard 0.1" 119 x 455mm.....	£10.99

STRIP BOARD TRACK CUTTER

STRIP BOARD TRACK CUTTER used for track cutting of strip board tracks. Insert the tool at the point where a break is required and twist clockwise.



CODE	TYPE	PRICE
601-550	Stripboard Track Cutter.....	£4.75

TERMINAL PINS

TERMINAL PINS for use with strip boards to allow solder connections for wires or to enable connections for test points. Available in pack of 100 pieces, single ended. Not suitable for use with matrix board 601-530.



CODE	TYPE	PRICE
601-560	Terminal Pins Single Ended 100 Pk.....	£1.45
601-570	Terminal Pins Single Ended 1000 Pk.....	£11.50

SELF-ADHESIVE COPPER TRACK

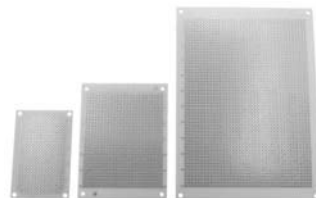
SELF-ADHESIVE COPPER TRACK useful for making up simple electrical and electronic circuits. Supplied on a 33 metre reel, 5mm wide with a self-adhesive backing.



CODE	TYPE	PRICE
19-0635	Self Adhesive Copper Track 33M.....	£9.75

PROTOTYPING BOARDS

PROTOTYPING BOARDS a prototyping board with an individual copper pad around each hole. Components are soldered into the board, then connected as required with wires, ideal for experimentation and 1-off designs. The rows and columns are labelled for easy hole identification and there is a mounting hole in each corner. Board thickness is 1.6mm, the material is Phenolic and hole pitch is (spacing): 2.54mm (0.1in.).



CODE	TYPE	PRICE
19-0602	Prototyping Circuit Board 72 x 47mm 371 Hole...	£0.89
19-0604	Prototyping Circuit Board 94 x 71mm 750 Hole...	£1.29
19-0606	Prototyping CircBoard 160 x 115mm 2200 Hole..	£2.49

MAG TAGS

MAG TAGS matching pair (N-S) of miniature high strength neodymium-iron-boron nickel-plated magnets with tinned copper flying leads that can be readily soldered. Make simple temporary connections to batteries, bulbs, etc., and any ferrous metal objects. Use for proximity sensors, reed switch triggering, connecting PCBs, prototyping, etc. Ideal for applications where connections need to be repeatedly made and broken, quickly and easily. Great for project work involving electrical circuits. Dimensions 5 x 6mm dia., connected to 40 x 0.65mm dia. tinned copper flexible leads. Current rating 8A, max operating temperature 12 0°C. Sold as a pair.



CODE	TYPE	PRICE
07-0030	Mag Tags 1 Pair.....	£4.50

PROTOBLOC BOARDS

PROTOBLOC is a prototyping system offering a fast and economical method of circuit construction and development. Solderless in concept it allows components to be used time and time again. Components are plugged into the board and are retained by double leaf spring contacts and the sockets are on a 2.54mm matrix, allowing all dual-in-line integrated circuits, plus many other components to simply be plugged into the board. It is an ideal system for the teaching of electronic systems and circuit design.

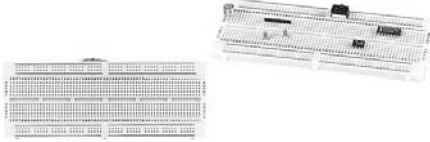
PROTOBLOC PROTOTYPING BOARD a protobloc with a total of 390 tie points consisting two sets of 29 rows of 5 interconnected contact sockets and 4 rows of 25 interconnected sockets suitable for use as power supply rails. All contact positions are clearly defined on an alphanumeric grid. The ABS polymer board is mounted on an adhesive foam base and can accommodate up to three 16-pin devices.



CODE	TYPE	PRICE
19-0000	Protobloc Prototyping Board.....	£4.99

SQUIRES ELECTRONIC COMPONENTS

PROTOBLOC 2 PROTOTYPING BOARD a protobloc with a total of 840 tie points consisting of two sets of 64 rows of 5 interconnected sockets and 4 rows of 50 interconnected sockets suitable for use as power supply rails. All contact positions are clearly defined on an alphanumeric grid. The ABS polymer board is mounted on an adhesive foam base and can accommodate up to 7 16-pin devices.



CODE	TYPE	PRICE
19-0002	Protobloc Prototyping Board 2.....	£8.99

PROTOBLOC 2A PROTOTYPING BOARD a protobloc with a total of 840 tie points consisting two sets of 64 rows of 5 interconnected contact sockets and 4 rows of 50 interconnected sockets suitable for use as power supply rails. All contact positions are clearly defined on an alphanumeric grid. The ABS polymer board is mounted onto a rigid base plate complete with three 4mm terminals in red, black and green for power connections. A mounting bracket, which clips into the base, is also provided to accept a variety of components including switches and potentiometers, etc..



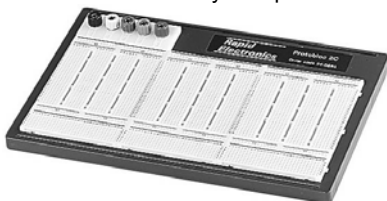
CODE	TYPE	PRICE
19-0004	Protobloc Prototyping Board 2A.....	£15.99

PROTOBLOC 2B PROTOTYPING BOARD offers the user ease of connection of power supply lines when used in a 4mm environment. Contains a total of 958 tie points, 5 colour-coded 4mm terminals are connected to contact sockets on the board for easy power supply connection. Comprises five sets of 28 rows of 6 interconnected contact sockets. All positions are clearly defined on an alphanumeric grid. The ABS polymer board is mounted on an adhesive foam base and units can be clipped together to accommodate larger circuit designs.



CODE	TYPE	PRICE
19-0006	Protobloc Prototyping Board 2B.....	£16.99

PROTOBLOC 2C PROTOTYPING BOARD offers the user ease of connection of power supply lines when used in a 4mm environment. Contains a total of 2854 tie points, 5 colour-coded 4mm terminals are connected to contact sockets on the board for easy power supply connection. Comprises 15 sets of 28 rows of 6 interconnected contact sockets and 12 rows of 24 interconnected sockets suitable for power supply rails. All positions are clearly defined on an alphanumeric grid and the ABS polymer board is mounted onto a rigid base plate. Suitable for many complex circuit design applications.



CODE	TYPE	PRICE
19-0007	Protobloc Prototyping Board 2C.....	£34.99

PROFESSIONAL PROTOTYPING BOARDS a professional prototyping board with a total of 555 contacts arranged in two blocks of 43 rows of five interconnected sockets on a 2.54mm (0.1in) pitch. Plus 5 other rows of 25 interconnected sockets, two on either side and one central between the two main blocks, are for use as bus-bars. The central gap between the two blocks of contacts allows DIL packaged devices to be inserted without the use of adaptors. Individual boards can be clipped together both sideways and end-on to produce larger boards. The Contacts are replaceable from underneath the board if damaged. A connection and maintenance kit is available comprising ten 1m lengths of single cored, colour-coded PVC covered wire for interconnections, plus five strips of five-way contacts and one 25-way contact strip for replacements. Dimensions (excluding joining lugs): 114 x 48 x 12mm.



CODE	TYPE	PRICE
19-0550	Professional Prototyping Board.....	£19.99
19-0555	Wire and Contacts Kit.....	£9.99

PROFESSIONAL PROTOTYPING BOARD a low-cost, quality prototyping board offering an easy and flexible means of constructing, experimenting and testing both analogue and digital designs. It has 64 connected contacts in 5 columns on each side of a central channel. The Contacts are clearly marked and are made from phosphor bronze/nickel silver to withstand at least 10,000 insertions, the contacts will accept solid wire from 0.3 to 0.8mm in diameter (20-30AWG). It has 4 power buses of 25 connected terminals and construction is suitable for high frequency and static sensitive designs. It is housed in a blue, durable ABS body which has slots/cutouts and a row of contacts to accept binding posts, toggle switches, potentiometers etc. additionally, either one or two edge plates are included to accept LCD displays, analogue meters, sockets, piezo speakers, etc. Edge plates also include a row of sockets to aid in connecting the peripheral devices to the main board.



Model	Dimensions mm	Tie points	No. of edge plates	Supplied accessories	PRICE
19-0920	133 x 229 x 22	880	1	5x knobs, 3x binding posts	£15.99
19-0926	225 x 238 x 22	2492	2	8x knobs, 4x binding posts	£25.99
19-0928	242 x 256 x 22	3300	2	5x knobs, 4x binding posts	£27.99

JUMPER LINKS for use with Protobloc prototyping boards. Specially designed plugs are employed which significantly extend the life of the connector. Available in a range of sizes. Colour-coded for easy identification. Supplied in packs of 10.



CODE	TYPE	PRICE
19-0008	Jumper Links 50mm 10 Pack.....	£5.49
19-0010	Jumper Links 70mm 10 Pack.....	£5.79
19-0012	Jumper Links 100mm 10 Pack.....	£5.99
19-0014	Jumper Links 150mm 10 Pack.....	£5.99

SQUIRES MODEL & CRAFT TOOLS

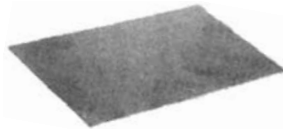
JUMPER LINKS KIT 350 pre-stripped, preformed jumper wires for use with Protobloc prototyping boards. Convenient hinged plastic storage case. A wide range of sizes. Variety of colours for easy identification.



CODE	TYPE	PRICE
19-0016	Jumper Links Kit.....	£18.99

LOW COST COPPER CLAD BOARD

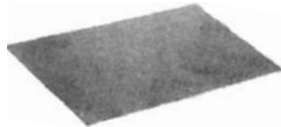
LOW COST COPPER CLAD BOARD copper clad printed circuit board using SRBP, a paper based material which is excellent for low cost printed circuit board production. The material is easier to drill than epoxy glassfibre. Single sided board only, various sizes are available. Various uses including prototyping PCB's, hobby work etc. Suitable etchant - ferric chloride solution.



CODE	TYPE	PRICE
601-860	L/Cost Copper Clad Board 100 x 160mm.....	£1.05
601-862	L/Cost Copper Clad Board 100 x 220mm.....	£1.49
601-864	L/Cost Copper Clad Board 223 x 160mm.....	£2.40
601-866	L/Cost Copper Clad Board 223 x 220mm.....	£3.35
601-868	L/Cost Copper Clad Board 203 x 305mm.....	£3.99

PLAIN COPPER CLAD BOARD

COPPER CLAD BOARD a high quality plain copper clad board in various sizes, single and double sided. Epoxy glass laminate, 305g square metre, thickness 1.6mm. Various uses including prototyping PCB's, hobby work etc. Suitable etchant - ferric chloride solution.



CODE	TYPE	PRICE
CCB800	Copper Clad Board S/Sided 100 x 160mm.....	£2.30
CCB805	Copper Clad Board S/Sided 233 x 160mm.....	£4.99
CCB810	Copper Clad Board S/Sided 100 x 220mm.....	£3.15
CCB815	Copper Clad Board S/Sided 233 x 220mm.....	£7.90
CCB360	Copper Clad Board S/Sided 203 x 95mm.....	£2.70
CCB365	Copper Clad Board S/Sided 203 x 305mm.....	£8.99
CCB820	Copper Clad Board D/Sided 100 x 160mm.....	£2.50
CCB825	Copper Clad Board D/Sided 233 x 160mm.....	£5.90
CCB830	Copper Clad Board D/Sided 100 x 220mm.....	£3.30
CCB835	Copper Clad Board D/Sided 233 x 220mm.....	£7.99
CCB845	Copper Clad Board D/Sided 203 x 305mm.....	£8.99

ETCH RESIST PEN

ETCH RESIST PEN for use on plain copper boards. Press tip to promote ink flow, apply slow even pressure.



CODE	TYPE	PRICE
180-988	Etch Resist Pen Fine.....	£1.99

FOTOBOARD 2

ECOMONY PHOTO ETCH PCB fotoboard 2 is a lower cost alternative to the FR4 used on professional boards. A comprehensive data sheet is supplied with these boards, outlining the techniques involved in the successful production of PCBs employing photo-etch methods. Manufactured in CEM/1 laminate with positive working UV-sensitive resist and Boards are protected by black plastic film. Particularly suited to educational users and requires half the concentration of developer than our previous Fotoboard 1. Not recommended for professional use.



CODE	TYPE	PRICE
19-0160	Econ Photoetch S/Side 100 x 160mm.....	£4.99
19-0162	Econ Photoetch S/Side 100 x 220mm.....	£5.99
19-0164	Econ Photoetch S/Side 203 x 114mm.....	£5.99
19-0166	Econ Photoetch S/Side 233 x 220mm.....	£13.99
19-0176	Econ Photoetch S/Side 305 x 457mm.....	£34.99
19-0168	Econ Photoetch D/Side 100 x 160mm.....	£5.99
19-0170	Econ Photoetch D/Side 100 x 220mm.....	£7.49
19-0172	Econ Photoetch D/Side 203 x 114mm.....	£7.49
19-0174	Econ Photoetch D/Side 233 x 220mm.....	£17.99
19-0178	Econ Photoetch D/Side 305 x 457mm.....	£39.99

PHOTO ETCH PCB fotoboard 2 is a photo-resist board in FR4 epoxy glass coated with positive working UV-sensitive resist. A comprehensive data sheet is supplied with these boards, outlining the techniques involved in the successful production of PCBs employing photo-etch methods. The boards are supplied with a protective black plastic film and available in single sided (SS) and double sided (DS) formats.



CODE	TYPE	PRICE
19-0105	Photoetch S/Side 100 x 160mm.....	£5.99
19-0110	Photoetch S/Side 100 x 220mm.....	£7.99
19-0115	Photoetch S/Side 203 x 114mm.....	£8.99
19-0120	Photoetch S/Side 233 x 220mm.....	£17.99
19-0145	Photoetch S/Side 305 x 457mm.....	£39.99
19-0125	Photoetch D/Side 100 x 160mm.....	£7.49
19-0130	Photoetch D/Side 100 x 220mm.....	£9.99
19-0135	Photoetch D/Side 203 x 114mm.....	£9.99
19-0140	Photoetch D/Side 233 x 220mm.....	£21.65
19-0150	Photoetch D/Side 305 x 457mm.....	£47.69

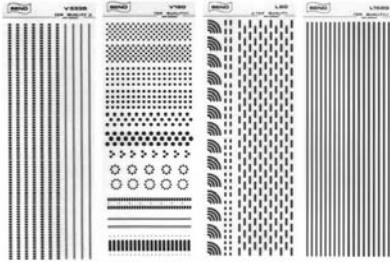
**IF THERE ARE ANY ITEMS
THAT WE HAVE FORGOTTEN
WHILST ADDING OUR NEW RANGES**

**PLEASE FEEL FREE
TO LET US KNOW**

SQUIRES ELECTRONIC COMPONENTS

ARTWORK AIDS

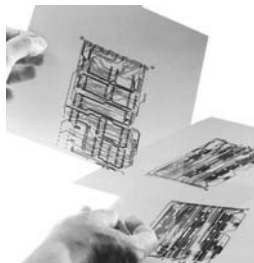
ARTWORK AIDS high quality etch-resist transfers for preparing PCB layouts. Circuits are prepared by rubbing down the transfers onto drafting film to produce artwork for UV exposure, etc. May also be applied directly on to copper clad board. Sheet size 255 x 90mm.



CODE	TYPE	PRICE
19-0870	Seno Assorted Pads V180.....	£4.99
19-0872	Seno Round Pads 1.9/0.45mm 2.1/0.45 V0203...	£4.99
19-0874	Seno Round Pads 2.5/0.45mm 2.8/0.45 V0405...	£4.99
19-0876	Seno Dil Pads V3335.....	£4.99
19-0087	Seno Straight Tracks 0.5/1.0mm L0510.....	£4.99
19-0880	Seno Straight Tracks 1.5/2.0mm L1520.....	£4.99
19-0882	Seno Tracks and Curves 0.5mm L05.....	£4.99
19-0884	Seno Tracks and Curves 1.0mm L10.....	£4.99
19-0886	Seno Tracks and Curves 1.5mm L15.....	£4.99
19-0888	Seno Tracks and Curves 2.0mm L20.....	£4.99

JETSTAR STANDARD & PREMIUM INKJET ARTWORK FILMS a specially formulated range of inkjet films for the production of artwork photo tools for graphics and PCB production. Special coatings allow dense images to be produced without the ink bleeding. Use Jetstar Standard with printers using dye-based ink and use Jetstar Premium with printers using either dye-based or pigment-based ink. Sheet size A4, available in packs of 10 and 100 sheets. Please ensure that your printer is capable of printing on to clear sheets before purchase. JetStar Standard is not suitable for use with pigment-based inks.

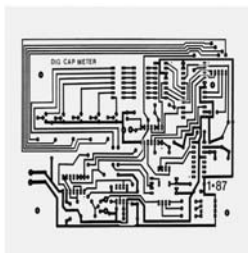
Note - image is for illustrative purposes only.



CODE	TYPE	PRICE
19-0780	JetStar Standard (Version II) A4 10 Sheets.....	£9.99
19-0782	JetStar Standard (Version II) A4 100 Sheets.....	£83.99
19-0790	JetStar Premium A4 10 Sheets.....	£19.99
19-0795	JetStar Premium A4 100 Sheets.....	£182.25

LASER PRINTER PCB ARTWORK FILM a specially formulated translucent film for the production of high-resolution PCB artwork directly from any laser printer. 75 micron base with special coating for high resolution keying and fixing of toner to produce crisp dense artwork. Accepts copier toner, enabling usable artwork to be copied from printed originals. Supplied in packs of 10 A4 or packs of 100 A4 size sheets.

Note - image is for illustrative purposes only.



CODE	TYPE	PRICE
19-0774	LaserStar Artwork Film A4 10 Sheets.....	£7.99
19-0776	LaserStar Artwork Film A4 100 Sheets.....	£71.55

ETCHING EQUIPMENT

SENO GS ETCHING SYSTEM offers a new level of safety, convenience, cleanliness and efficiency to the etching of one-off PCBs. It is supplied as a complete kit, the kit comprises a sealable etching sleeve, etch chemicals in pellet form, leakproof storage box and neutraliser. It is sufficient for at least twelve 100 x 160mm Eurocards. The sealed system protects user from dangers and mess associated with common etchants and allows a constant visual check to be maintained on the rate of etching. Etching can be accelerated by simply heating under a warm tap. The etching solution is stored in the leakproof box between applications and when the solution is exhausted simply add the neutraliser, seal and mix two hours later the neutralised pack is hard, ready for the dustbin.



CODE	TYPE	PRICE
19-0385	Seno GC Etching System.....	£17.99

POLYPROPYLENE TRAY a general purpose polypropylene tray suitable for a wide variety of uses such as developing and etching printed circuit boards and filing and storage, etc. Overall size 380 x 240 x 55mm, with all-round carrying lip. Colour may vary.



CODE	TYPE	PRICE
19-0745	P/propylene Processing Tray 380 x 240 x 55mm...	£3.99

PROCESSING TRAY a high quality rigid polystyrene processing tray for developing or tinning PCBs. The spout facilitates emptying and it has an all-round carrying lip. Size 254 x 203 x 55mm. Colour may vary.



CODE	TYPE	PRICE
19-0748	Polypropylene Processing Tray PC190.....	£4.99

COPPER ETCHANT a high quality ferric chloride etchant which is supplied in convenient pellet form, ideal for etching copper clad boards. It provides reasonably safe etchant when combined with warm water. Supplied in 250g bags.



CODE	TYPE	PRICE
19-0722	Electrolube Copper Etchant 250g.....	£12.99

POSITIVE PHOTORESIST a high quality positive photoresist for reproduction of circuits, diagrams and images on metals. It is fast drying, develops using UV or sunlight and has a fine resolution down to 0.1mm. Easily processed with alkali developer and resistant to non-alkali etching solutions. Supplied in 200ml aerosols.



CODE	TYPE	PRICE
19-0726	Positive Photoresist 200ml.....	£16.99

SQUIRES MODEL & CRAFT TOOLS

PHOTORESIST DEVELOPER a high quality aqueous alkaline developer for use in conjunction with positive resists. It has fast developing time, long active life and is buffered to give repeatable accurate images. 250ml of the concentrate makes 1250ml of working solution. Supplied in 250ml bottles.



CODE	TYPE	PRICE
19-0724	Electrolube Photoresist Developer 250ml.....	£8.99

SENO TIN PLATING CRYSTALS specially developed for depositing resistant tin surfaces. The powder is mixed with warm 50°C water, allowed to cool and used at room temperature, no heated tanks are required. Low operating temperature allows very small tin molecules to be deposited, giving a very smooth and hard surface. The longer the board is left immersed, the thicker the deposit, 1.5 to 2.0 microns in 30 minutes, 4.5 microns in up to 2 hours. The solution will last up to 6 months, unmixed powder has unlimited shelf life. Available in 90g (1 litre) or 450g (5 litres) packs, sufficient to cover 0.6m² or 2.7m² of boards.



CODE	TYPE	PRICE
19-0775	Seno Immerse Tin Crystals 90g for 1Ltr.....	£20.99
19-0777	Seno Immerse Tin Crystals 450g for 5Ltr.....	£62.99

FERRIC CHLORIDE SOLUTION a special formulation of ferric chloride for etching metals and all types of copper circuit boards. Supplied as full strength (45 Baume), suitable for metals such as stainless steel, nickel, brass, etc. Dilute by an additional 30% with water for use with copper. Supplied in 5 litre containers, weight 7.5kg.



CODE	TYPE	PRICE
19-0758	Ferric Chloride Liquid Etchant 5Ltr.....	£19.99

PCB DEVELOPER suitable for use with all alkaline developed, positive photo resists and fully aqueous dry film photo resists. Available either in dry crystalline form, sufficient to produce 500ml solution (1 litre when used with Fotoboard 2), or as 1 litre of concentrate, to make 10 litres of working solution (20 litres when used with Fotoboard 2). The developer gives a long tank life and fast developing time. The shelf life of the solution is considerably greater than the crystalline form and should be kept in undiluted form in an airtight container. It is safe to use and contains no sodium hydroxide.



CODE	TYPE	PRICE
19-0395	Photoresist Uni Developer Crystals Senso 4007..	£1.99
19-7900	Liquid Developer Concentrate 1Lt 4006V05.....	£19.99

PCB ETCHANT a ferric chloride etchant in a convenient pellet form. Combined with warm water it provides a reasonably safe etchant. Suitable for use with PCB tanks 34-0760, 34-0764 and 34-0765. Use 250g of pellets per 500ml of water. Available in 250g and 500g packs and in 2.5kg buckets



CODE	TYPE	PRICE
19-0388	PCB Etchant 250g for 1/2Ltr.....	£3.05
600-390	PCB Etchant 500g for 1Ltr.....	£5.55
600-785	PCB Etchant 2.5kg for 5Ltrs.....	£18.00

CLEAR PCB ETCHANT an alternative etchant, superior to standard ferric chloride. Completely odourless, remains clear and does not crystallise out. Achieves satisfactory etching in 6 to 8 min at 45 to 50°C. Supplied in packs of approx. 400g or 1.1kg in powder form to produce approx. 2 or 5 litres respectively of working solution. Use with Etch Tanks.



CODE	TYPE	PRICE
19-0392	PCB Fine Etch Crystals 400g for 2Ltrs.....	£15.99
19-0394	PCB Fine Etch Crystals 1100g for 5Ltrs.....	£30.35

FERRIC CHLORIDE STAIN REMOVER a powder for the removal of ferric chloride stains from clothing, PCB tanks, benches and other affected areas. Concentration required will depend upon nature of stain requiring removal, typical concentration in solution is between 100g/200ml and 100g/1000ml of water. It may be used directly on badly affected areas. Supplied in packs of 1kg.



CODE	TYPE	PRICE
19-0430	Ferric Chloride Stain Remover 1Kg.....	£22.15

UNIVERSAL SOLVENT a general-purpose non-toxic water miscible solvent. It may be used for cleaning glass, PVC, ABS, perspex, etc. It removes unwanted solder flux from PCBs and strips photo-resist from etched boards. Supplied in 50ml and 1l bottles.



CODE	TYPE	PRICE
19-0778	Universal Solvent 50ml SN4010.....	£4.45
19-7800	Universal Solvent 1Ltr SN4010V01.....	£29.00

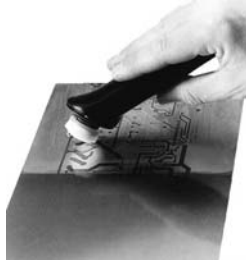
ETCH RESIST STRIPPER a stripper to remove the photoresist from an etched circuit board. Supplied as a 1 litre concentrate which makes 5 litres of working solution it is best used in a PCB processing tank at 45 to 50°C. The photoresist strips from the copper in approx. 2-3 minutes. Supplied in 1ltr bottles.



CODE	TYPE	PRICE
19-0400	Etch Resist Stripper 1Lt.....	£19.45

SQUIRES ELECTRONIC COMPONENTS

SENO PCB APPLICATORS a range of applicators containing ready-to-use, room temperature chemicals. Completely sealed in a container with sponge applicator and a valve mechanism dispenses precisely the right quantity of chemicals. When not in use the sponge is protected by a cap. Waste-free and completely safe each mixture is non-hazardous and can be thrown away with normal refuse when exhausted. The developers are totally free from sodium hydroxide and each applicator has a shelf life of two years. The range of applicators available, which offer a real alternative to mixing hazardous chemicals in trays and tanks are:-



- SN110 Normal developer applicator – develops all alkaline positive working photo resists
- SN111 Soft developer – as the normal developer but for the spray-on photo resists or very freshly applied photo resist
- SN100 Photo resist applicator – easily applied, very quick drying, positive working photo resist.
- SN120 Resist strip – removes photo resist after etching.
- SN140 Flux applicator – provides protective flux to copper surface

CODE	TYPE	PRICE
19-0050	Seno Developer Applicator Normal SN110.....	£10.15
19-0055	Seno Developer Applicator Soft SN111.....	£10.15
19-0060	Seno Photoresist Applicator SN100.....	£12.15
19-0065	Seno Photoresist Strip Applicator SN120.....	£10.15
19-0070	Seno Flux Applicator SN140.....	£10.15

UNIVERSAL PCB PROCESSING TANK

UNIVERSAL PCB PROCESSING TANK develop, strip or tin PCBs with this universal tank.



- Accepts boards up to 320 x 260mm (12.6 x 10.23in.)
- Splash-proof lid
- Full length board holder
- 5 litre capacity
- Board holders feature yellow side clips which can be secured to close the sides of the mesh when very small boards are being processed
- Specially developed 500 watt heater and thermostat sensor with protective silica sheath
- Heater has an internal re-settable safety device to protect the tank if it is inadvertently turned on without any liquid in
- Splash proof electrical controls are located in a recessed panel on the case front
- Neons indicate when the mains heater is operative
- Supplied complete with a syphon, IEC socket and 2 metre mains cable with moulded 13amp plug
- Width 180mm, Depth 525mm, Height 380mm
- Mega type PA107

CODE	TYPE	PRICE
19-0759	Universal PCB Processing Tank.....	£222.00

POLIFIX BLOCK

POLIFIX BLOCK a specially formulated ultra-fine non-metallic polishing compound carried in an elastic bonding material which cleans, degreases and polishes in one simple procedure. To use simply polish back and forth in straight lines and wipe with a clean cloth to remove traces of the abrasive. Dims:- 30 x 40 x 20mm.



CODE	TYPE	PRICE
AB0050	Polifix Block.....	£4.50

SCRATCH BRUSH

SCRATCH BRUSH a high quality propelling pencil type, supplied with a glass refill. Brass and steel refills are also available.



CODE	TYPE	PRICE
AB0080	4mm Scratch Brush.....	£3.99
AB0090	4mm Refill Glass.....	£0.65
AB0092	4mm Refill Glass Pack of 10.....	£6.00
AB0095	4mm Refill Glass Box of 24.....	£12.99
AB0144	4mm Refill Glass Pack of 144.....	£72.00

CLEANING BRUSHES

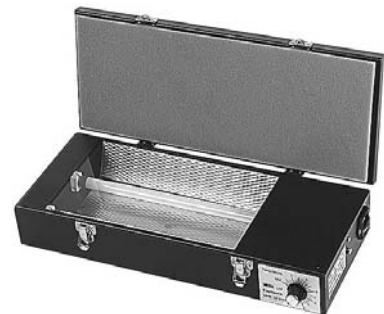
BRASS WIRE BRUSH miniature brass cleaning brushes with a 1" dense filled head on a 6" wooden stock. Ideal for many cleaning applications. Available with a medium or hard brass wire fill.



CODE	TYPE	PRICE
AB0180	Brass Wire Brush Medium.....	£1.70
AB0181	Brass Wire Brush Coarse.....	£1.70

UV EXPOSURE UNIT

ULTRAVIOLET EXPOSURE UNIT WITH TIMER an ultraviolet exposure unit for use in the preparation of photo resist circuit boards. 1:1 artwork, consisting of opaque transfers on translucent drafting film, is placed on the glass screen and the photo-sensitive material is placed on top. The lid incorporates a foam pad which exerts an even pressure to hold the artwork and photo board in close contact when closed. Exposure starts automatically when the six minute mechanical timer is rotated to the correct expose time. Exposure area is 240 x 165mm and incorporates two 8W actinic UV tubes, mains on/off switch and indicator, mains cable and 13A plug.



CODE	TYPE	PRICE
19-0700	UV Exposure Unit Small LV202E.....	£144.99
19-0707	8W Tubes and Starters for LV202E.....	£22.99

SQUIRES MODEL & CRAFT TOOLS

LIGHT BOXES

ART AND CRAFT LIGHT BOXES a range of good quality wooden frame lights boxes. Ideal for tracing designs and patterns, for stencilling, embossing, quilting, calligraphy, lettering and displaying slides and transparencies. Wood finish with white work surface and lip to retain paper & pens. Integral holders and slots for pen, pencils paint brushes and other materials. The light source is from energy saving tubes, (1 x 11W tube for A4 size 2 x 13W tubes of A3 size).



CODE	TYPE	PRICE
120-404	Light Craft Light Box A4.....	£39.99
120-405	11 Watt Spare Tube for L/Craft Light Box A4.....	£4.99
120-403	Light Craft Light Box A3.....	£59.99
120-406	13 Watt Spare Tube for L/Craft Light Box A3.....	£6.99

PCB HOLDER

UNIVERSAL PCB HOLDER a low cost board holder for up to 20 boards. Manufactured from polypropylene it is impervious to almost all PCB manufacturing chemicals, it can be washed clean and is virtually indestructible and has greater rigidity over vacuum-formed alternatives.

Size 400 x 77 x 25mm



CODE	TYPE	PRICE
19-3630	Universal PCB Holder.....	£14.55

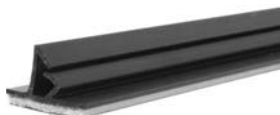
PCB MOUNTING STRIPS

PCB CARD GUIDE specifically designed for mounting of printed circuit boards within chassis and rack systems. It has a self-adhesive backing and accept 1.6mm thick PCBs. Length 204mm.



CODE	TYPE	PRICE
19-0916	PCB Card Guide 204mm.....	£2.15

PCB MOUNTING STRIPS mounting strips for printed circuit boards. They are single mount and have self-adhesive backing. Accepts 1.6mm thick PCBs. Length 205mm.



CODE	TYPE	PRICE
19-0918	PCB Mounting Strip 205mm.....	£2.25

VARIABLE SPEED DRILL KIT

VARIABLE SPEED DRILL KIT a superb kit that is suitable for use by hobbyist and professional users alike. The kit features the superb MB150 30 watt High Torque Drill powered by the 82012 24VA Variable Speed Transformer, the kit also includes 30 assorted accessories for drilling, grinding, polishing and cleaning etc. All supplied in a handy carry and storage case. Chuck capacity 0.4 - 3.2mm.



CODE	TYPE	PRICE
MB5001	Minicraft MB5001 Variable Speed Drill Kit.....	£49.99

DRILL STAND

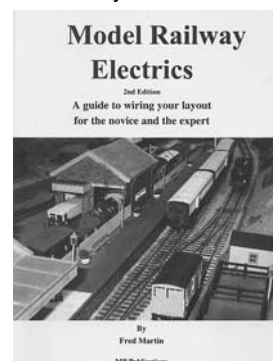
UNIVERSAL DRILL STAND a high quality drill stand that is suitable for use with many manufacturers drills including:- Dremel, Proxxon, Minicraft, Maxicraft, Bausch, Bohler, Rotacraft and many others. The drill is held securely in position by a strap clamp around the drill body. The "at rest" position of the drill can be raised or lowered, tilted to either side and a depth stop is featured. A rack and pinion mechanism is used to lower the drill. The base has fixing holes allowing it to be fixed to a bench if required. Base dimensions:- 200 x 140mm, the column height is 240mm.



CODE	TYPE	PRICE
MB541	Universal Drill Stand PZ541.....	£39.99

MODEL RAILWAY ELECTRIC'S

MODEL RAILWAY ELECTRIC'S BOOK by Fred Martin, a guide to wiring a model railway for the novice and experienced modeller alike. The book covers wiring for cab control, points, point motors, layout planning, wiring multiple baseboards, passive sections, fiddle yards and reversing.



CODE	TYPE	PRICE
500-999	Model Railway Electrics.....	£5.00